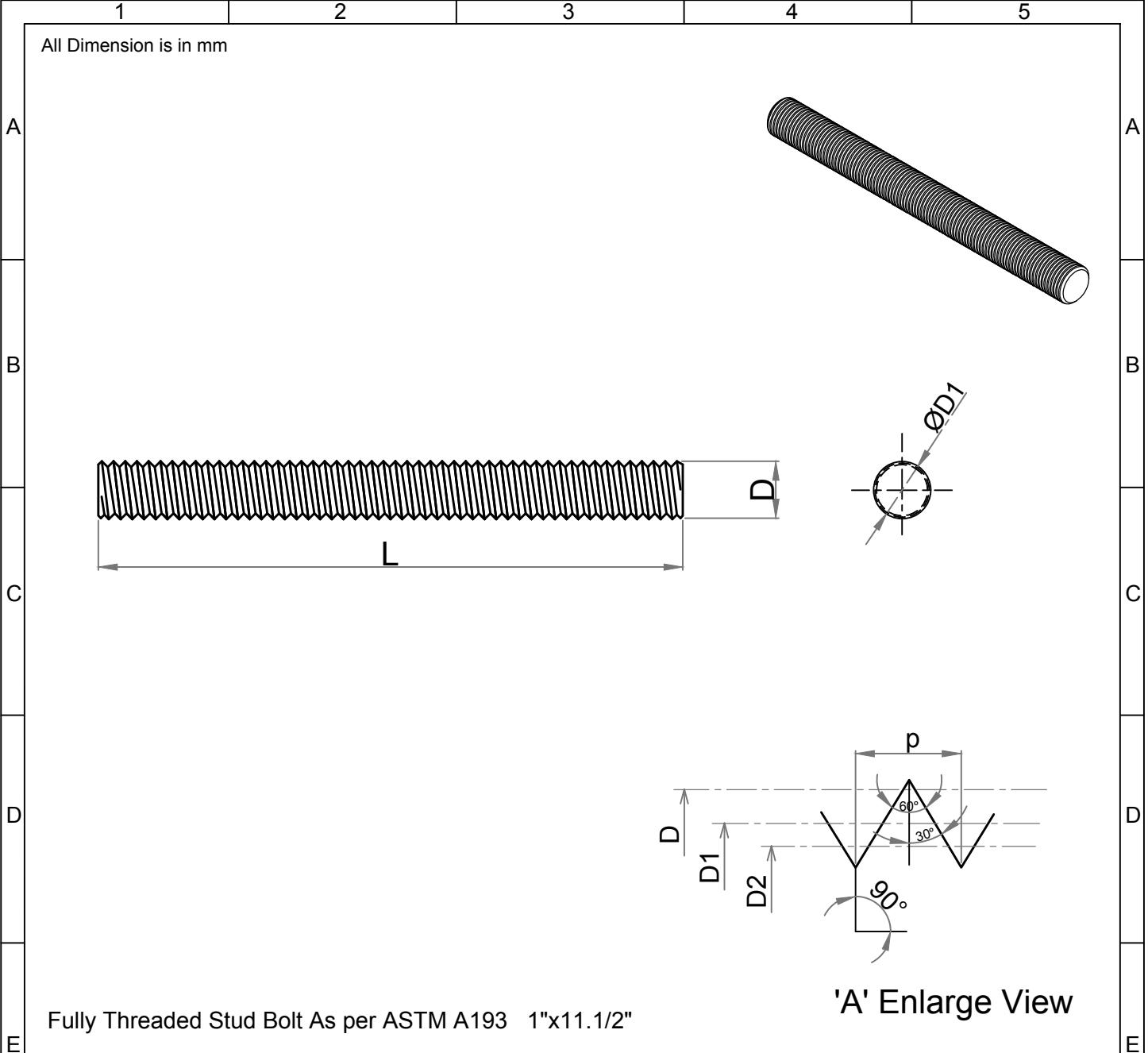


Note: This Drawing is the property of Kapil Enterprises-Kundli, and must not be copied or reproduced without permission or Written authorisation by Kapil Enterprises-Kundli



Fully Threaded Stud Bolt As per ASTM A193 1"x11.1/2"

Parameters	Symbol	Minimum	Maximum	Drawing No.- <b>KE-BASE-2200-00138-B18.1.1-A193-L43-1x11.1/2</b>		
				Dimension as per B18.1.1		
Total Length	L	292.10	295.10	Chemical & Mechanical properties as per ASTM A193		
Threading Length	I	F.T	F.T			
Major diameter	D	24.96	25.35	Grade L43		
Pitch diameter	D1	23.11	23.29	Title Stud Bolt		
Minor diameter	D2	21.45	-	Size 1"x11.1/2" Status- <b>Approved</b>		
Chamfer	u	0.00	6.00	Dated 13.06.2018		
Thread per Inch	TPI	8 UNC		Mass/Weight 0.98224 kg/piece		
Thread tolerance class	C	2A				
Amendment				Drawn By Pankaj Kumar (Ass. QC Manager)	Checked By Santosh Kumar (Plant Head-GM)	Approved By Kapil Aggarwal CEO-MD
Details	Revision No.	Dated	Authorised by			
					<b>Kapil Enterprises</b> 330 EHTP, HSIIDC, Kundli Industrial Estate Sonapat - Haryana-131028, Ph:9811009061 Email:sales@bigboltnut.com, kapil@roll-fast.com	