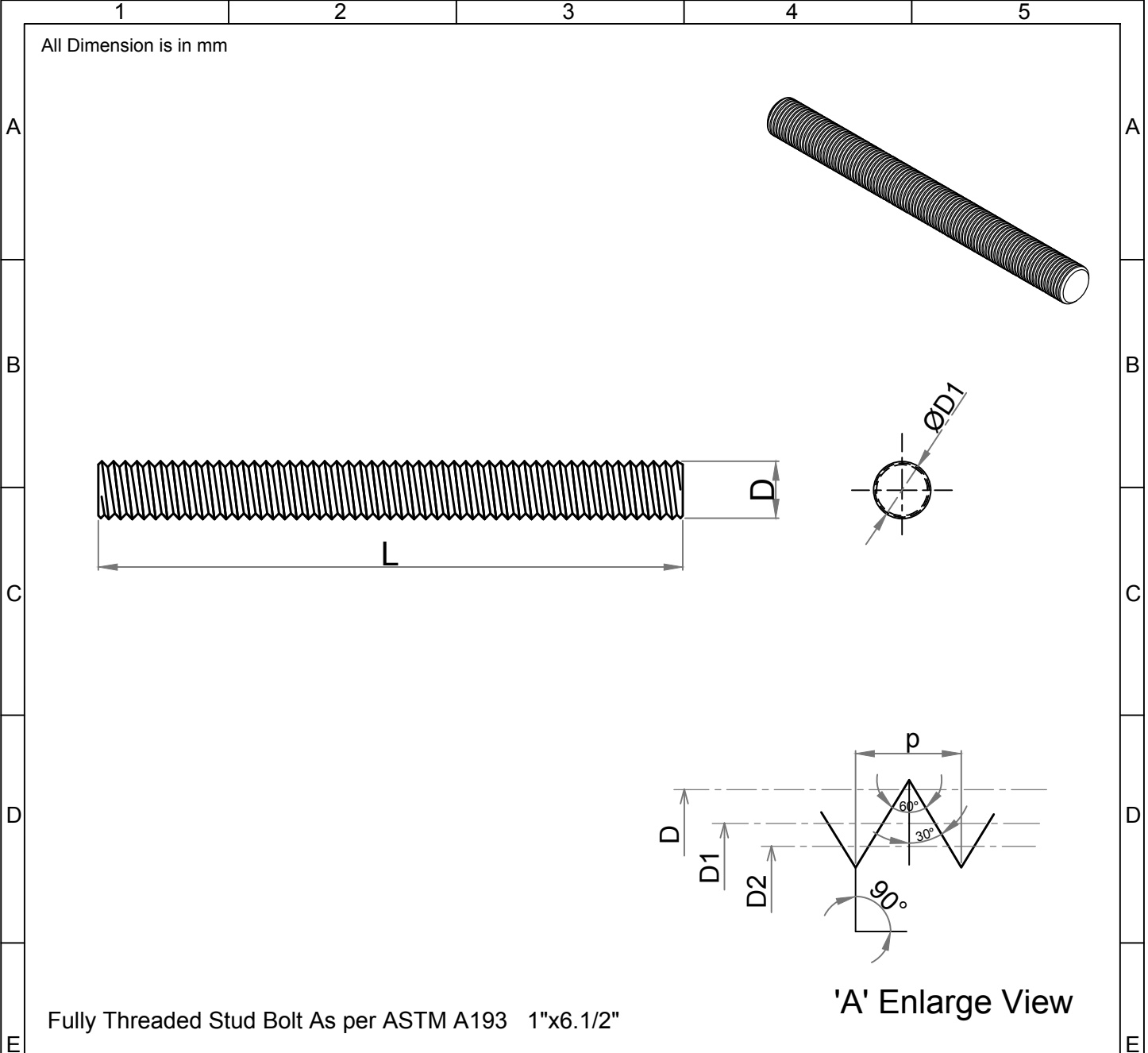


Note: This Drawing is the property of Kapil Enterprises-Kundli, and must not be copied or reproduced without permission or Written authorisation by Kapil Enterprises-Kundli



Fully Threaded Stud Bolt As per ASTM A193 1"x6.1/2"

'A' Enlarge View

Parameters	Symbol	Minimum	Maximum	Drawing No.- KE-BASE-2200-00127-B18.1.1-A193-L43-1x6.1/2		
				Dimension as per B18.1.1		
Total Length	L	165.10	168.10	Chemical & Mechanical properties as per ASTM A193		
Threading Length	l	F.T	F.T	Grade L43		
Major diameter	D	24.96	25.35	Title Stud Bolt		
Pitch diameter	D1	23.11	23.29	Size 1"x6.1/2"	Status- Approved	
Minor diameter	D2	21.45	-	Dated 13.06.2018	Proj.	
Chamfer	u	0.00	6.00	Mass/Weight 0.55518 kg/piece		
Thread per Inch	TPI	8 UNC				
Thread tolerance class	C	2A				
Amendment				Drawn By Pankaj Kumar (Ass. QC Manager)	Checked By Santosh Kumar (Plant Head-GM)	Approved By Kapil Aggarwal CEO-MD
Details	Revision No.	Dated	Authorised by	<p>Kapil Enterprises 330 EHTP, HSIIDC, Kundli Industrial Estate Sonapat - Haryana-131028, Ph:9811009061 Email:sales@bigboltnut.com, kapil@roll-fast.com</p>		