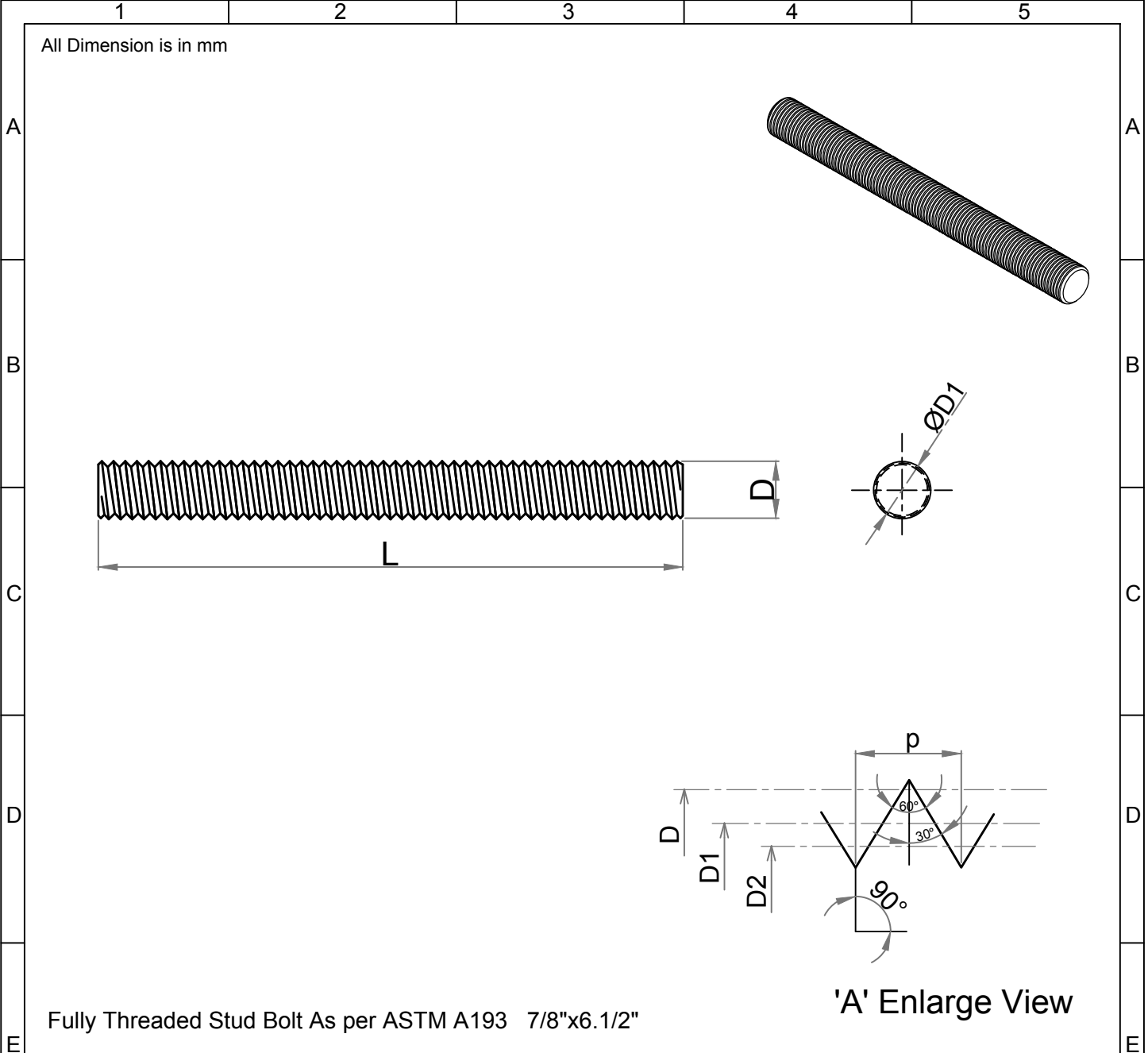


Note: This Drawing is the property of Kapil Enterprises-Kundli, and must not be copied or reproduced without permission or Written authorisation by Kapil Enterprises-Kundli



Fully Threaded Stud Bolt As per ASTM A193 7/8"x6.1/2"

Parameters	Symbol	Minimum	Maximum	Drawing No.- <b>KE-BASE-2200-00102-B18.1.1-A193-L43-7/8x6.1/2</b>	
				Dimension as per B18.1.1	
Total Length	L	165.10	168.10	Chemical & Mechanical properties as per ASTM A193	
Threading Length	I	F.T	F.T	Grade L43	
Major diameter	D	21.82	22.18	Title Stud Bolt	
Pitch diameter	D1	20.18	20.34	Size 7/8"x6.1/2"	
Minor diameter	D2	18.71	-	Status- <b>Approved</b>	
Chamfer	u	0.00	5.00	Dated 07.06.2018	Proj.
Thread per Inch	TPI	9 UNC		Mass/Weight 0.42008 kg/piece	
Thread tolerance class	C	2A			
Amendment					
Details	Revision No.	Dated	Authorised by	Drawn By Pankaj Kumar (Ass. QC Manager)	Checked By Santosh Kumar (Plant Head-GM)
				Approved By Kapil Aggarwal CEO-MD	
				<div style="display: inline-block; vertical-align: middle; text-align: left; margin-left: 10px;"> <b>Kapil Enterprises</b>            330 EHTP, HSIIDC, Kundli Industrial Estate            Sonapat - Haryana-131028, Ph:9811009061            Email:sales@bigboltnut.com, kapil@roll-fast.com         </div>	