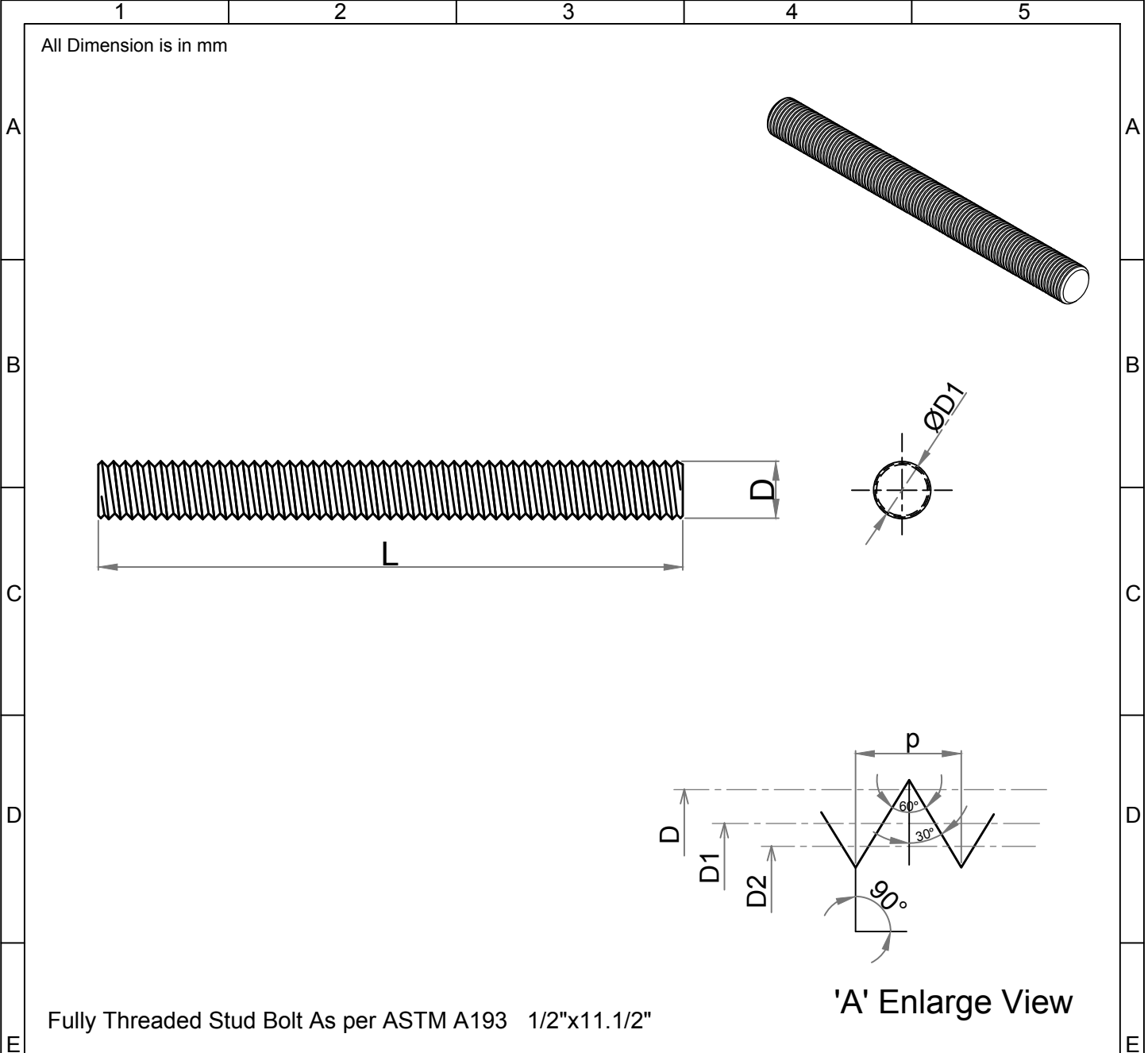


Note: This Drawing is the property of Kapil Enterprises-Kundli, and must not be copied or reproduced without permission or Written authorisation by Kapil Enterprises-Kundli



Fully Threaded Stud Bolt As per ASTM A193 1/2"x11.1/2"

Parameters	Symbol	Minimum	Maximum	Drawing No.- KE-BASE-2200-00029-B18.1.1-A193-L43-1/2x11.1/2			
				Dimension as per B18.1.1			
Total Length	L	292.10	295.10	Chemical & Mechanical properties as per ASTM A193			
Threading Length	I	F.T	F.T	Grade L43			
Major diameter	D	12.39	12.66	Title Stud Bolt			
Pitch diameter	D1	11.26	11.39	Size	1/2"x11.1/2"		
Minor diameter	D2	10.26	-	Dated	18.05.2018		
Chamfer	u	0.00	4.00	Mass/Weight	0.23516 kg/piece		
Thread per Inch	TPI	13 UNC					
Thread tolerance class	C	2A					
Amendment							
Details	Revision No.	Dated	Authorised by				Drawn By Pankaj Kumar (Ass. QC Manager)
						Kapil Enterprises 330 EHTP, HSIIDC, Kundli Industrial Estate Sonapat - Haryana-131028, Ph:9811009061 Email:sales@bigboltnut.com, kapil@roll-fast.com	