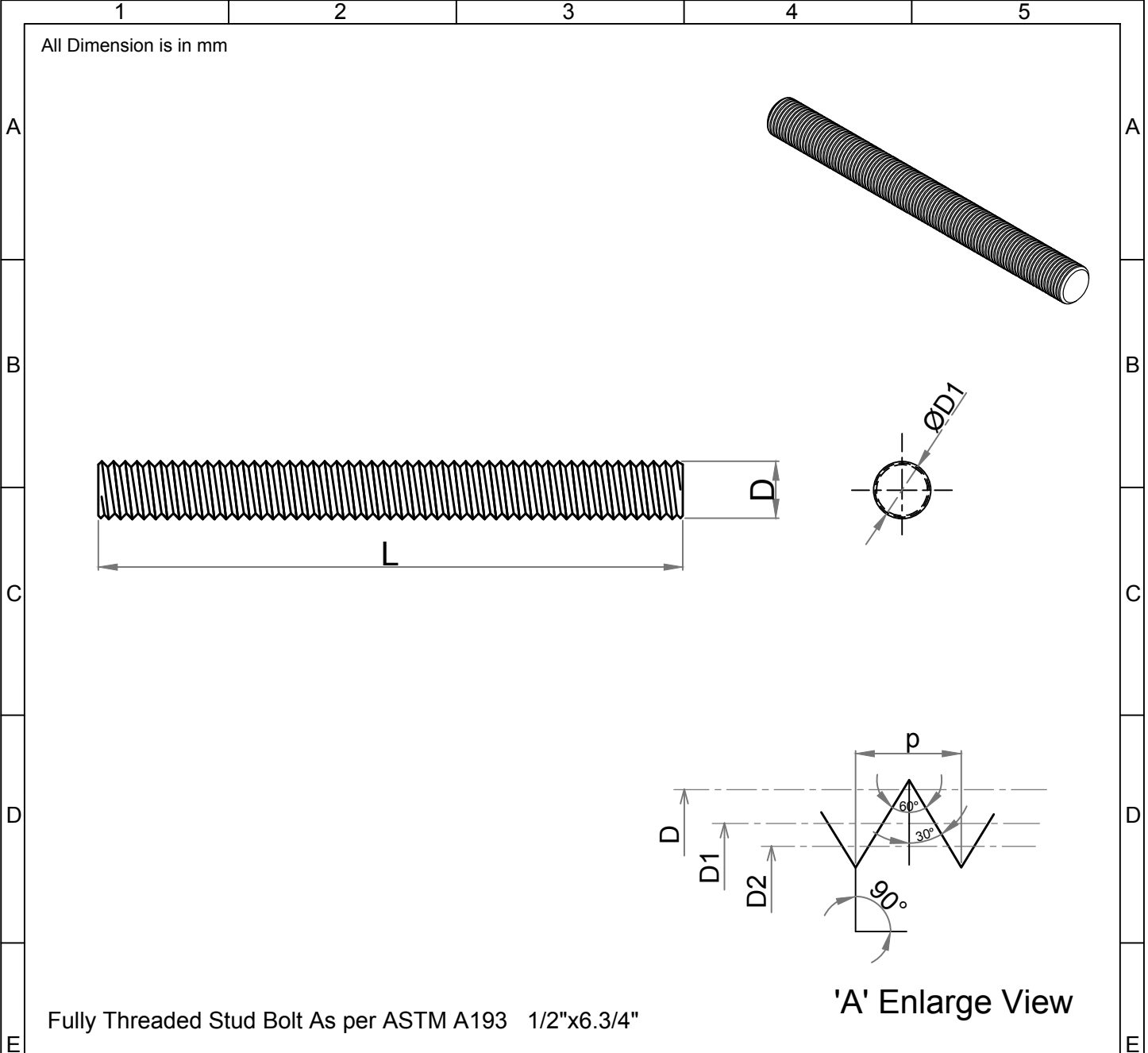


Note: This Drawing is the property of Kapil Enterprises-Kundli, and must not be copied or reproduced without permission or Written authorisation by Kapil Enterprises-Kundli



Fully Threaded Stud Bolt As per ASTM A193 1/2"x6.3/4"

Parameters	Symbol	Minimum	Maximum	Drawing No.- <b>KE-BASE-2200-00019-B18.1.1-A193-L43-1/2x6.3/4</b>		
				Dimension as per B18.1.1		
Total Length	L	171.45	174.45	Chemical & Mechanical properties as per ASTM A193		
Threading Length	I	F.T	F.T	Grade L43		
Major diameter	D	12.39	12.66	Title Stud Bolt		
Pitch diameter	D1	11.26	11.39	Size 1/2"x6.3/4"		
Minor diameter	D2	10.26	-	Status- <b>Approved</b>		
Chamfer	u	0.00	4.00	Dated 18.05.2018	Proj.	
Thread per Inch	TPI	13 UNC		Mass/Weight 0.13803 kg/piece		
Thread tolerance class	C	2A				
Amendment						
Details	Revision No.	Dated	Authorised by	Drawn By Pankaj Kumar (Ass. QC Manager)	Checked By Santosh Kumar (Plant Head-GM)	Approved By Kapil Aggarwal CEO-MD
				<div style="display: inline-block; vertical-align: middle; text-align: left; margin-left: 10px;"> <b>Kapil Enterprises</b>                      330 EHTP, HSIIDC, Kundli Industrial Estate                      Sonapat - Haryana-131028, Ph:9811009061                      Email:sales@bigboltnut.com, kapil@roll-fast.com                 </div>		