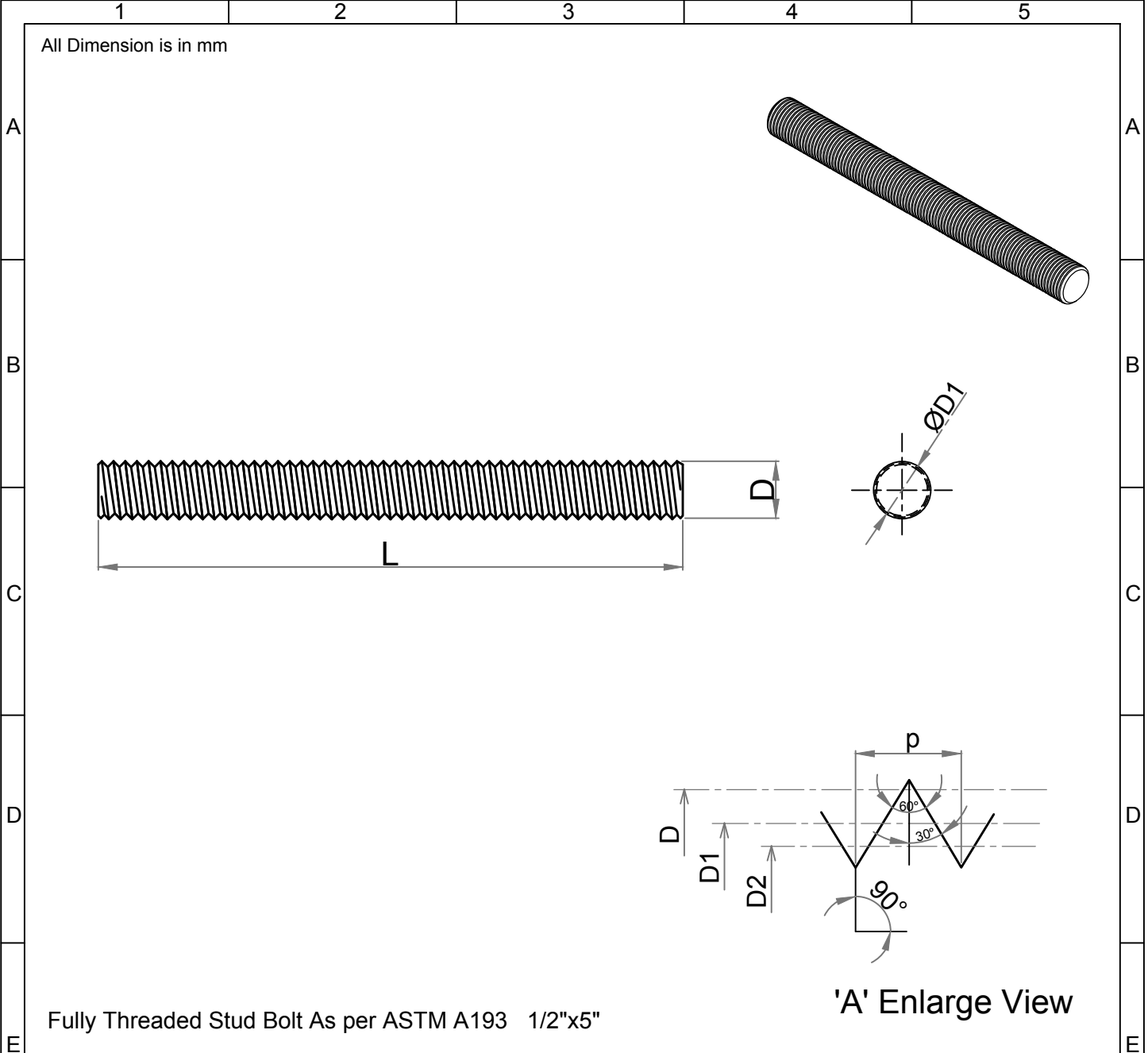


Note: This Drawing is the property of Kapil Enterprises-Kundli, and must not be copied or reproduced without permission or Written authorisation by Kapil Enterprises-Kundli



Fully Threaded Stud Bolt As per ASTM A193 1/2"x5"

Parameters	Symbol	Minimum	Maximum	Drawing No.- KE-BASE-2200-00012-B18.1.1-A193-L43-1/2x5	
				Dimension as per B18.1.1	
Total Length	L	127.00	130.00	Chemical & Mechanical properties as per ASTM A193	
Threading Length	I	F.T	F.T	Grade L43	
Major diameter	D	12.39	12.66	Title Stud Bolt	
Pitch diameter	D1	11.26	11.39	Size 1/2"x5" Status- Approved	
Minor diameter	D2	10.26	-	Dated 18.05.2018	
Chamfer	u	0.00	4.00	Mass/Weight 0.10224 kg/piece	
Thread per Inch	TPI	13 UNC			
Thread tolerance class	C	2A			
Amendment					
Details	Revision No.	Dated	Authorised by		
				Drawn By Pankaj Kumar (Ass. QC Manager) Checked By Santosh Kumar (Plant Head-GM) Approved By Kapil Aggarwal CEO-MD	
				Kapil Enterprises 330 EHTP, HSIIDC, Kundli Industrial Estate Sonapat - Haryana-131028, Ph:9811009061 Email:sales@bigboltnut.com, kapil@roll-fast.com	