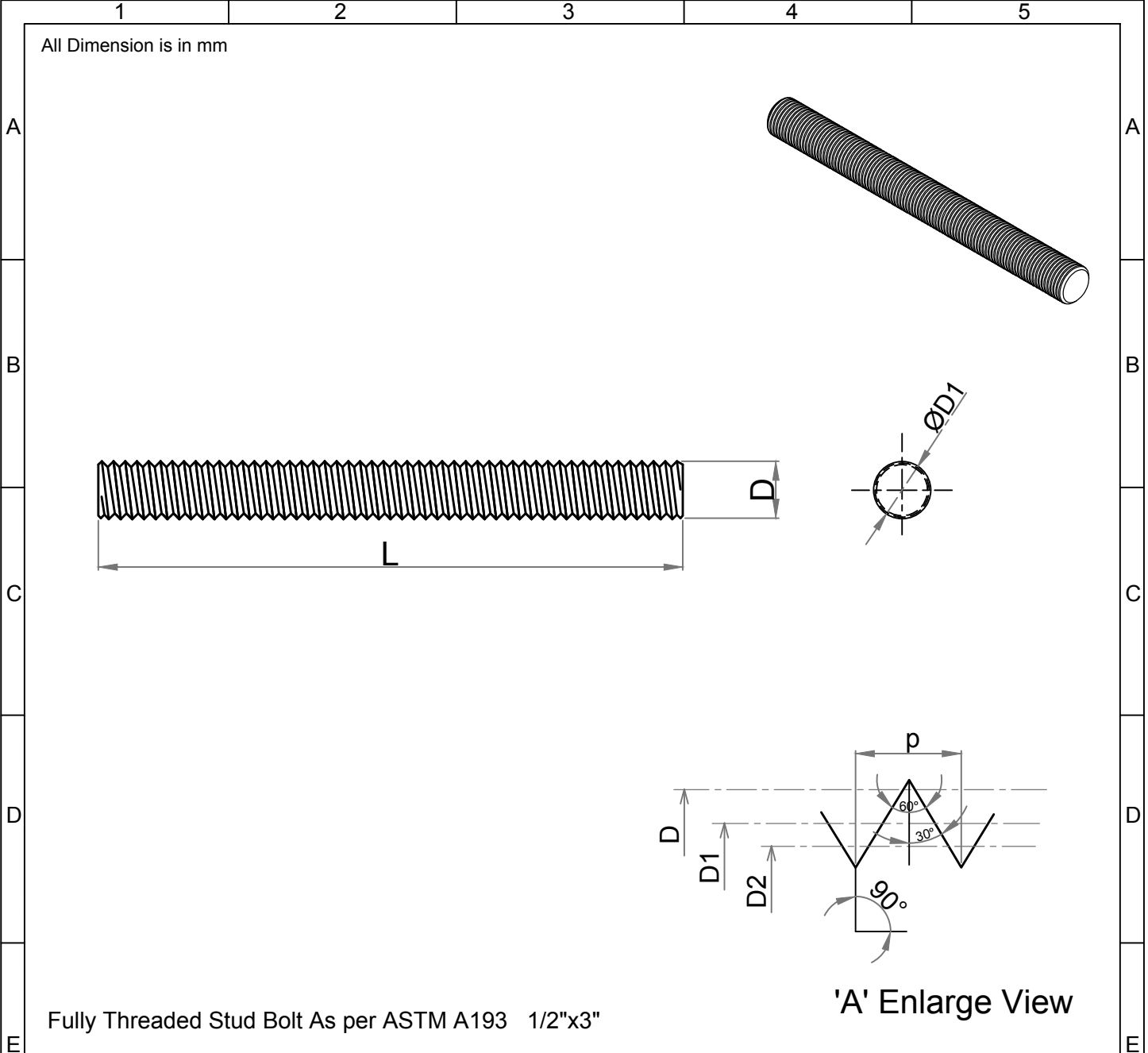


Note: This Drawing is the property of Kapil Enterprises-Kundli, and must not be copied or reproduced without permission or Written authorisation by Kapil Enterprises-Kundli



Fully Threaded Stud Bolt As per ASTM A193 1/2"x3"

Parameters	Symbol	Minimum	Maximum	Drawing No.- KE-BASE-2200-00004-B18.1.1-A193-L43-1/2x3
				Dimension as per B18.1.1
Total Length	L	76.20	79.20	Chemical & Mechanical properties as per ASTM A193
Threading Length	I	F.T	F.T	
Major diameter	D	12.39	12.66	Grade L43
Pitch diameter	D1	11.26	11.39	Title Stud Bolt
Minor diameter	D2	10.26	-	Size 1/2"x3" Status- Approved
Chamfer	u	0.00	4.00	Dated 18.05.2018 Proj.
Thread per Inch	TPI	13 UNC		Mass/Weight 0.06135 kg/piece
Thread tolerance class	C	2A		<div style="display: flex; justify-content: space-around;"> <div style="text-align: center;"></div> <div style="text-align: center;"></div> <div style="text-align: center;"></div> </div>
Amendment				
Details	Revision No.	Dated	Authorised by	Checked By Santosh Kumar (Plant Head-GM)
				Approved By Kapil Aggarwal CEO-MD
				Kapil Enterprises 330 EHTP, HSIIDC, Kundli Industrial Estate Sonapat - Haryana-131028, Ph:9811009061 Email:sales@bigboltnut.com, kapil@roll-fast.com