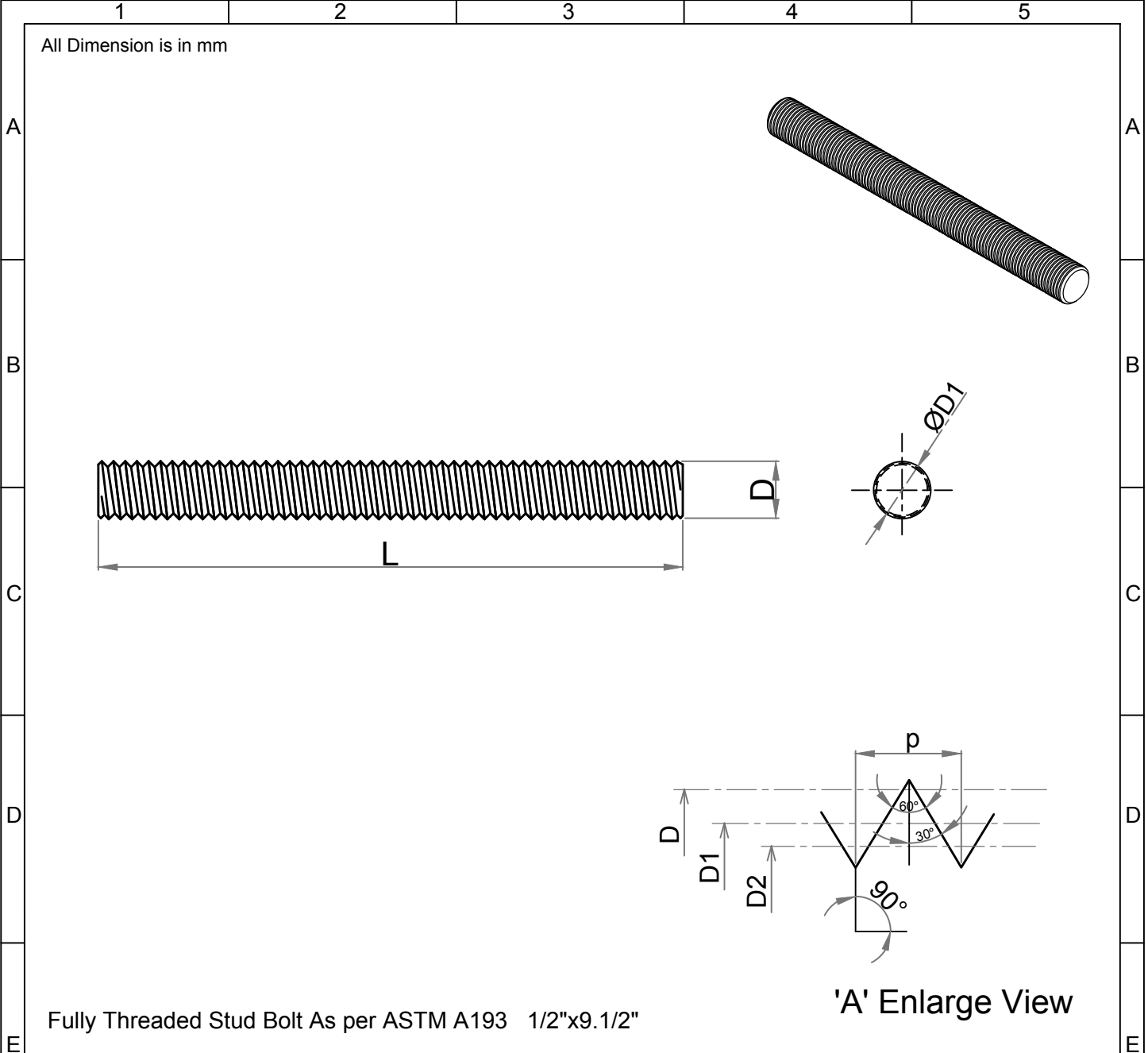


Note: This Drawing is the property of Kapil Enterprises-Kundli, and must not be copied or reproduced without permission or Written authorisation by Kapil Enterprises-Kundli



Fully Threaded Stud Bolt As per ASTM A193 1/2"x9.1/2"

Parameters	Symbol	Minimum	Maximum	Drawing No.- KE-BASE-2200-00025-B18.1.1-A193-B8T-1/2x9.1/2		
				Dimension as per B18.1.1		
Total Length	L	241.30	244.30	Chemical & Mechanical properties as per ASTM A193		
Threading Length	I	F.T	F.T	Grade B8T		
Major diameter	D	12.39	12.66	Title Stud Bolt		
Pitch diameter	D1	11.26	11.39	Size	1/2"x9.1/2"	
Minor diameter	D2	10.26	-	Dated	18.05.2018	
Chamfer	u	0.00	4.00	Mass/Weight	0.19426 kg/piece	
Thread per Inch	TPI	13 UNC				
Thread tolerance class	C	2A				
Amendment						
Details	Revision No.	Dated	Authorised by			
					Kapil Enterprises 330 EHTP, HSIIDC, Kundli Industrial Estate Sonapat - Haryana-131028, Ph:9811009061 Email:sales@bigboltnut.com, kapil@roll-fast.com	