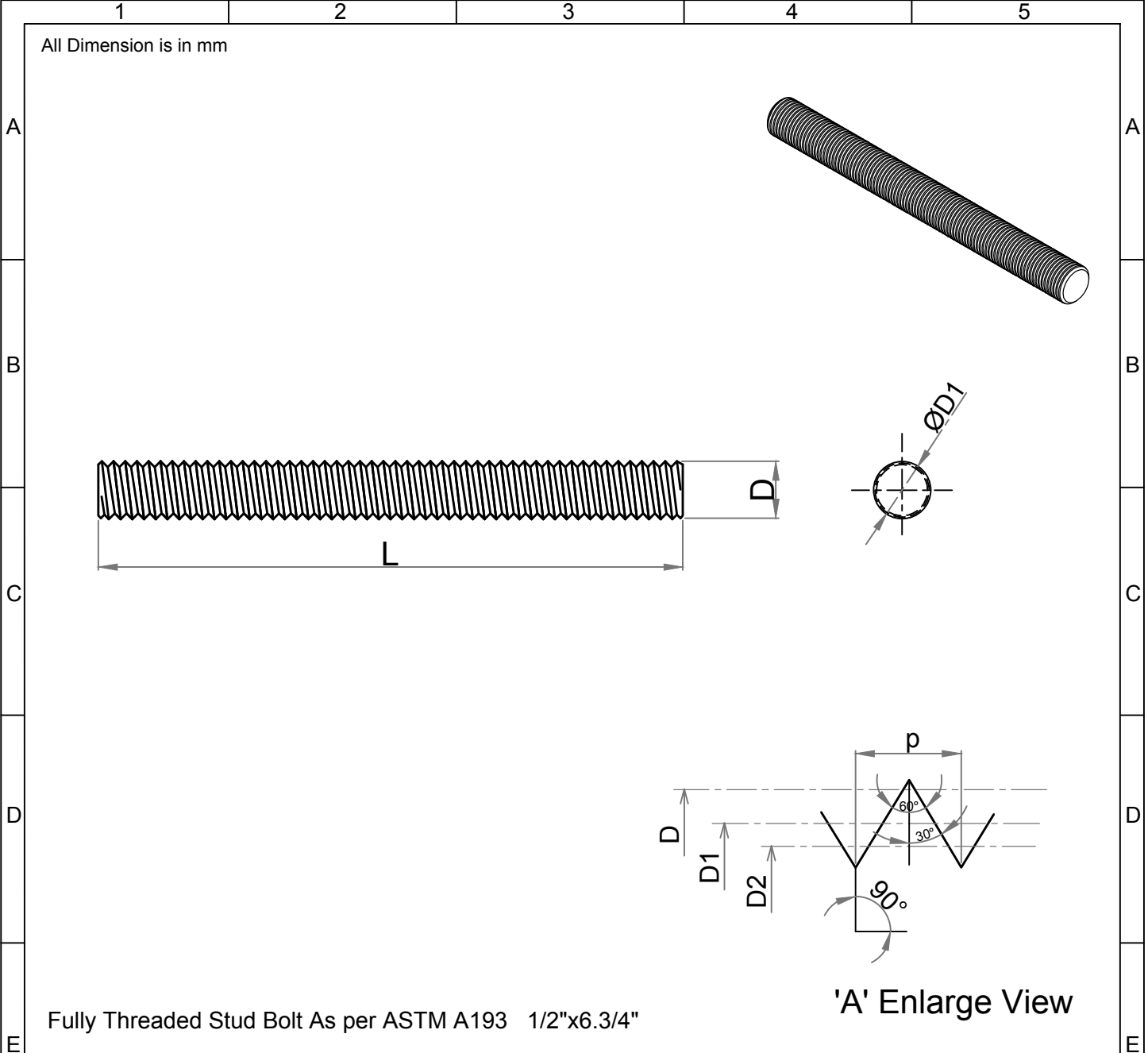


Note: This Drawing is the property of Kapil Enterprises-Kundli, and must not be copied or reproduced without permission or Written authorisation by Kapil Enterprises-Kundli



Fully Threaded Stud Bolt As per ASTM A193 1/2"x6.3/4"

Parameters	Symbol	Minimum	Maximum	Drawing No.-	
				KE-BASE-2200-00019-B18.1.1-A193-B8T-1/2x6.3/4	
Total Length	L	171.45	174.45	Dimension as per	B18.1.1
Threading Length	I	F.T	F.T	Chemical & Mechanical properties as per	ASTM A193
Major diameter	D	12.39	12.66	Grade	B8T
Pitch diameter	D1	11.26	11.39	Title	Stud Bolt
Minor diameter	D2	10.26	-	Size	1/2"x6.3/4"
Chamfer	u	0.00	4.00	Dated	18.05.2018
Thread per Inch	TPI	13 UNC		Mass/Weight	0.13803 kg/piece
Thread tolerance class	C	2A		Proj.	
Amendment					
Details	Revision No.	Dated	Authorised by	Drawn By Pankaj Kumar (Ass. QC Manager)	Checked By Santosh Kumar (Plant Head-GM)
					Approved By Kapil Aggarwal CEO-MD
					Kapil Enterprises 330 EHTP, HSIIDC, Kundli Industrial Estate Sonapat - Haryana-131028, Ph:9811009061 Email:sales@bigboltnut.com, kapil@roll-fast.com