

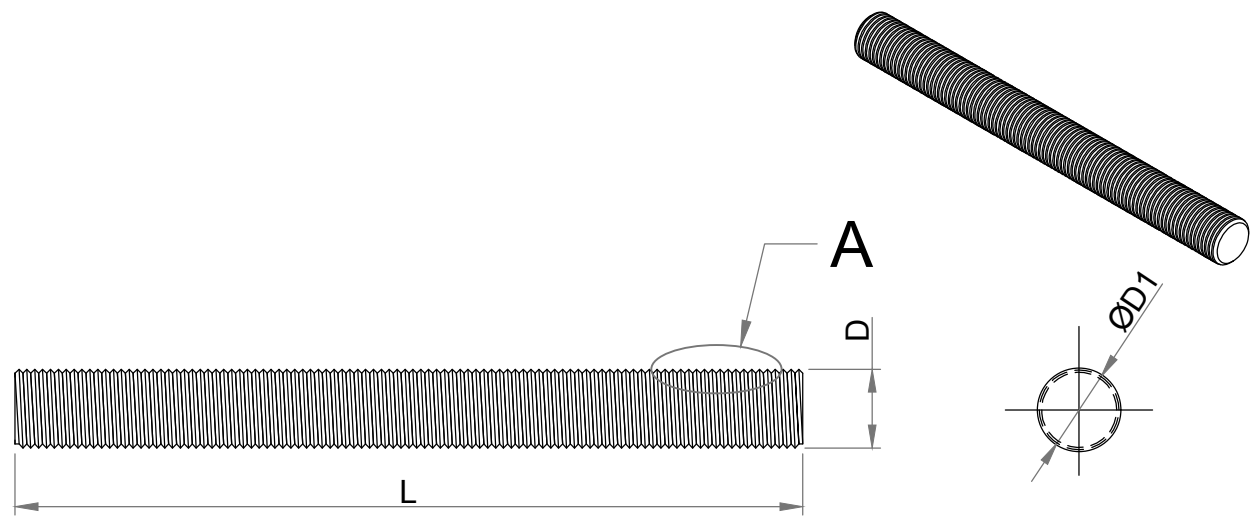
A B C D E F

Parameters	Symbol	Minimum	Maximum
Total Length	L	88.90	91.90
Threading Length	l	F.T	F.T
Major diameter	D	37.66	38.04
Pitch diameter	D1	35.80	35.98
Minor diameter	D2	34.15	-
Chamfer	u	0.00	8.00
Thread per Inch	TPI	8 UNC	

1

2

3



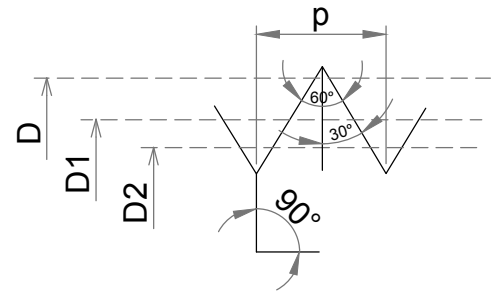
1

2

3

Dimension as per	B 18.1.1
Chemical & Mechanical properties as per	ASTM A193
Thread tolerance class (C)	2A
Grade	B7M
Weight	0.68264 kg/piece

4



'A' Enlarge View

4

Drawing Number <b>KE-BASE-2200-00215-B18.1.1-A193-B7M-1.1/2x3.1/2</b>		SIZE <b>1.1/2"x3.1/2"</b>	TITLE <b>Stud Bolt</b>			
AMMENDMENT		Date - 02.08.2018	DIMENSIONS ARE IN MILLIMETERS			Approved By Kapil Aggarwal CEO-MD
DETAILS	REVISION	DATE	<b>Big Bolt Nut</b>	<b>ROLL FAST</b>	<b>KAPIL ENTERPRISES</b>	330 EHTP, HSSIIDC, Kundli Industrial Estate Sonepat-Haryana-131028, Ph:9811009061 Email:-sales@bigboltnut.com, kapil@roll-fast.com
<b>REMOVE SHARP EDGES &amp; BURRS</b>	SHEET SIZE <b>A4</b>	SCALE <b>NTS</b>				

5

5

A B C D E F

