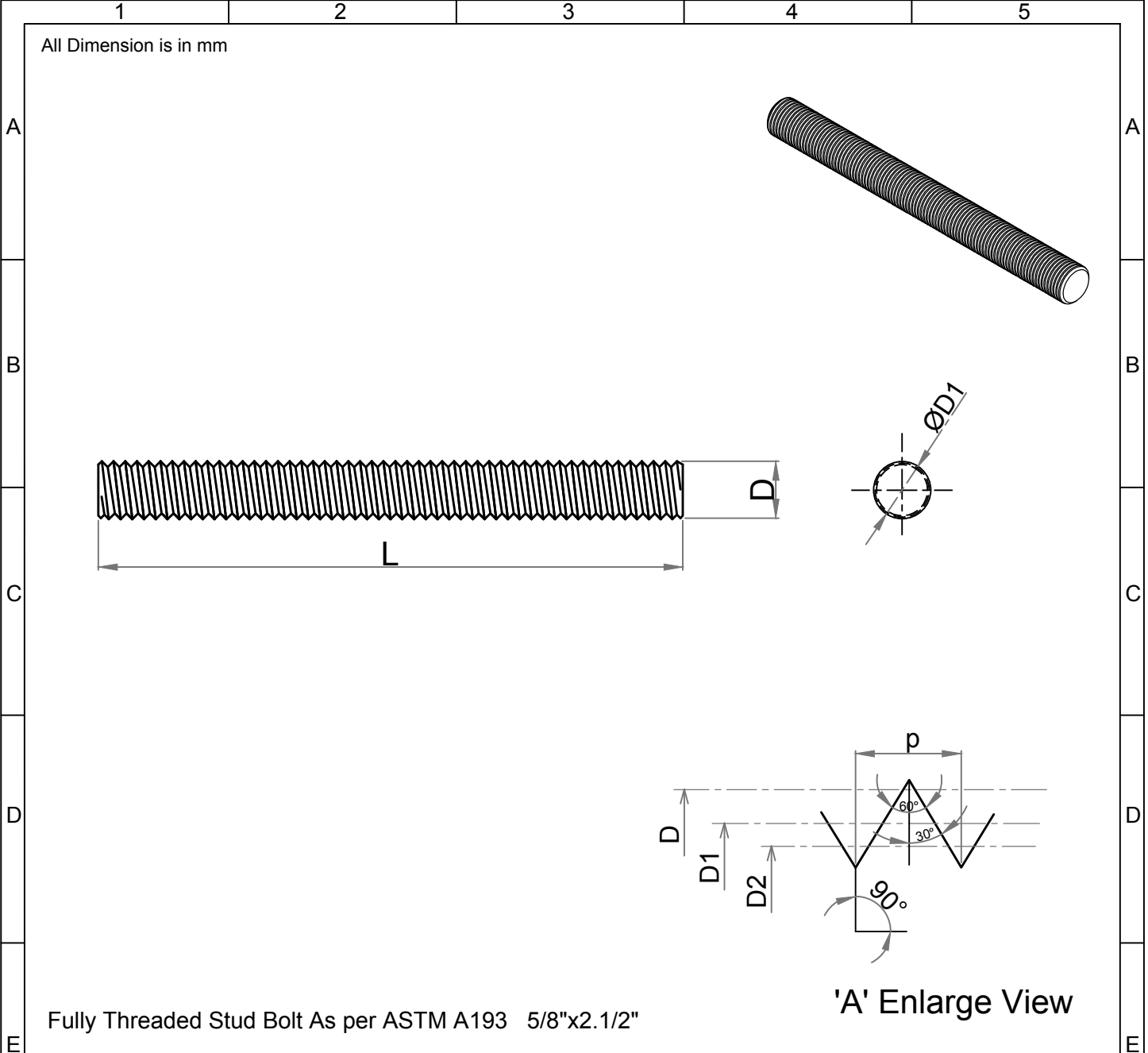


Note: This Drawing is the property of Kapil Enterprises-Kundli, and must not be copied or reproduced without permission or Written authorisation by Kapil Enterprises-Kundli



Fully Threaded Stud Bolt As per ASTM A193 5/8"x2.1/2"

| Parameters             | Symbol       | Minimum | Maximum       | Drawing No.-<br><b>KE-BASE-2200-00032-B18.1.1-A193-B7M-5/8x2.1/2</b>  |  |   |
|------------------------|--------------|---------|---------------|---|--|---|
|                        |              |         |               | Dimension as per B18.1.1  |  |   |
| Total Length           | L            | 63.50   | 66.50         | Chemical & Mechanical properties as per ASTM A193   |  |   |
| Threading Length       | I            | F.T     | F.T           | Grade B7M   |  |   |
| Major diameter         | D            | 15.53   | 15.83         | Title Stud Bolt   |  |   |
| Pitch diameter         | D1           | 14.20   | 14.34         | Size 5/8"x2.1/2"  |  |   |
| Minor diameter         | D2           | 13.00   | -             | Status- <b>Approved</b>   |  |   |
| Chamfer                | u            | 0.00    | 5.00          | Dated 18.05.2018  | Proj.  |   |
| Thread per Inch        | TPI          | 11 UNC  |               | Mass/Weight 0.08193 kg/piece  |  |   |
| Thread tolerance class | C            | 2A      |               |   |  |   |
| Amendment              |              |         |               |   |  |   |
| Details                | Revision No. | Dated   | Authorised by | Drawn By<br>Pankaj Kumar<br>(Ass. QC Manager)   | Checked By<br>Santosh Kumar<br>(Plant Head-GM) | Approved By<br>Kapil Aggarwal<br>CEO-MD |
|                        |              |         |               | <div style="display: inline-block; vertical-align: middle; text-align: left; margin-left: 10px;"> <b>Kapil Enterprises</b><br/>           330 EHTP, HSIIDC, Kundli Industrial Estate<br/>           Sonapat - Haryana-131028, Ph:9811009061<br/>           Email:sales@bigboltnut.com, kapil@roll-fast.com         </div> |  |   |