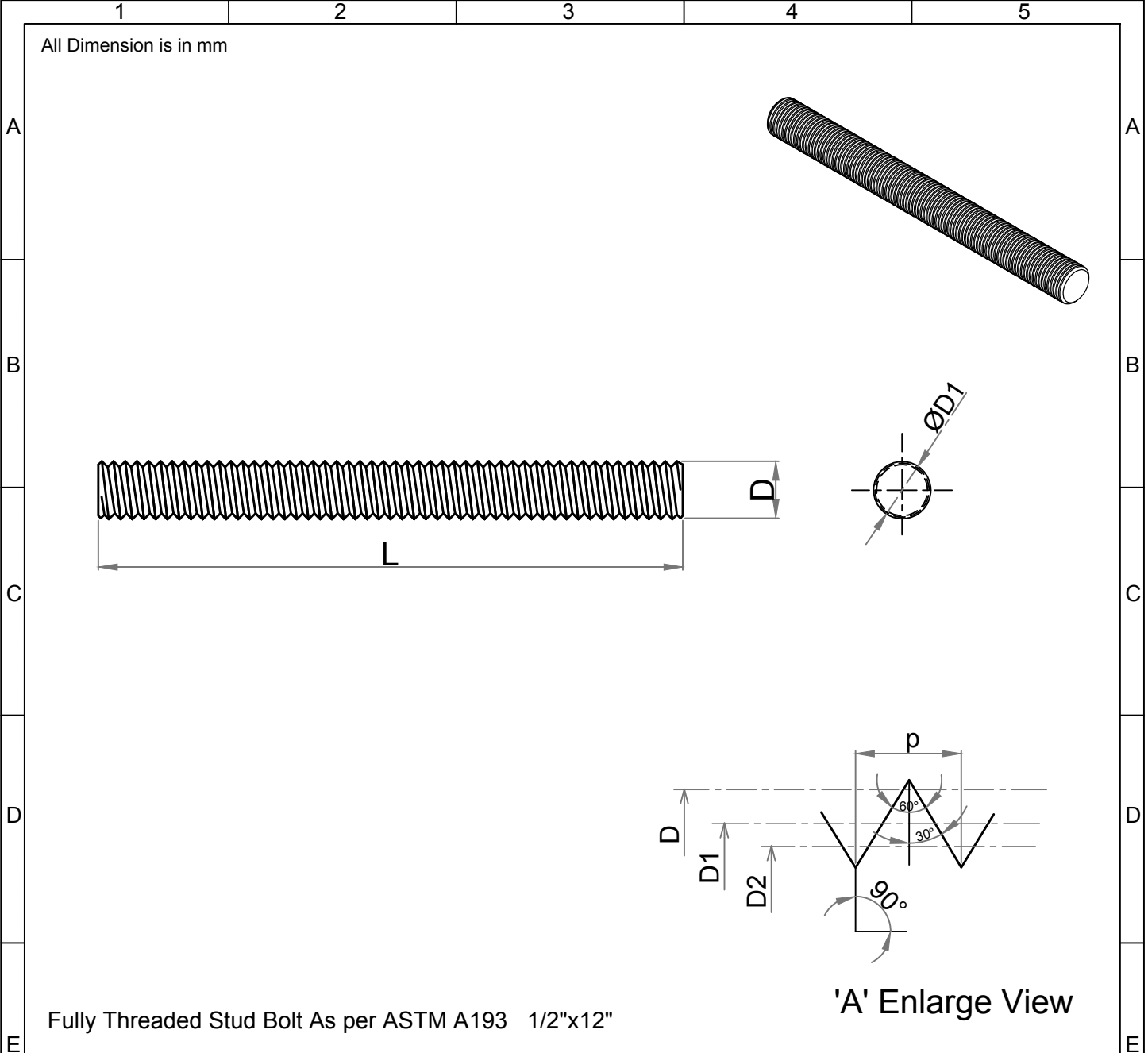


Note: This Drawing is the property of Kapil Enterprises-Kundli, and must not be copied or reproduced without permission or Written authorisation by Kapil Enterprises-Kundli



Fully Threaded Stud Bolt As per ASTM A193 1/2"x12"

Parameters	Symbol	Minimum	Maximum	Drawing No.- <b>KE-BASE-2200-00030-B18.1.1-A193-B7M-1/2x12</b>		
				Dimension as per B18.1.1		
Total Length	L	304.80	307.80	Chemical & Mechanical properties as per ASTM A193		
Threading Length	l	F.T	F.T	Grade B7M		
Major diameter	D	12.39	12.66	Title Stud Bolt		
Pitch diameter	D1	11.26	11.39	Size	1/2"x12"	
Minor diameter	D2	10.26	-	Status- <b>Approved</b>		
Chamfer	u	0.00	4.00	Dated	18.05.2018	
Thread per Inch	TPI	13 UNC		Mass/Weight	0.24538 kg/piece	
Thread tolerance class	C	2A				
Amendment						
Details	Revision No.	Dated	Authorised by	Drawn By Pankaj Kumar (Ass. QC Manager)	Checked By Santosh Kumar (Plant Head-GM)	Approved By Kapil Aggarwal CEO-MD
				<b>Kapil Enterprises</b> 330 EHTP, HSIIDC, Kundli Industrial Estate Sonapat - Haryana-131028, Ph:9811009061 Email:sales@bigboltnut.com, kapil@roll-fast.com		