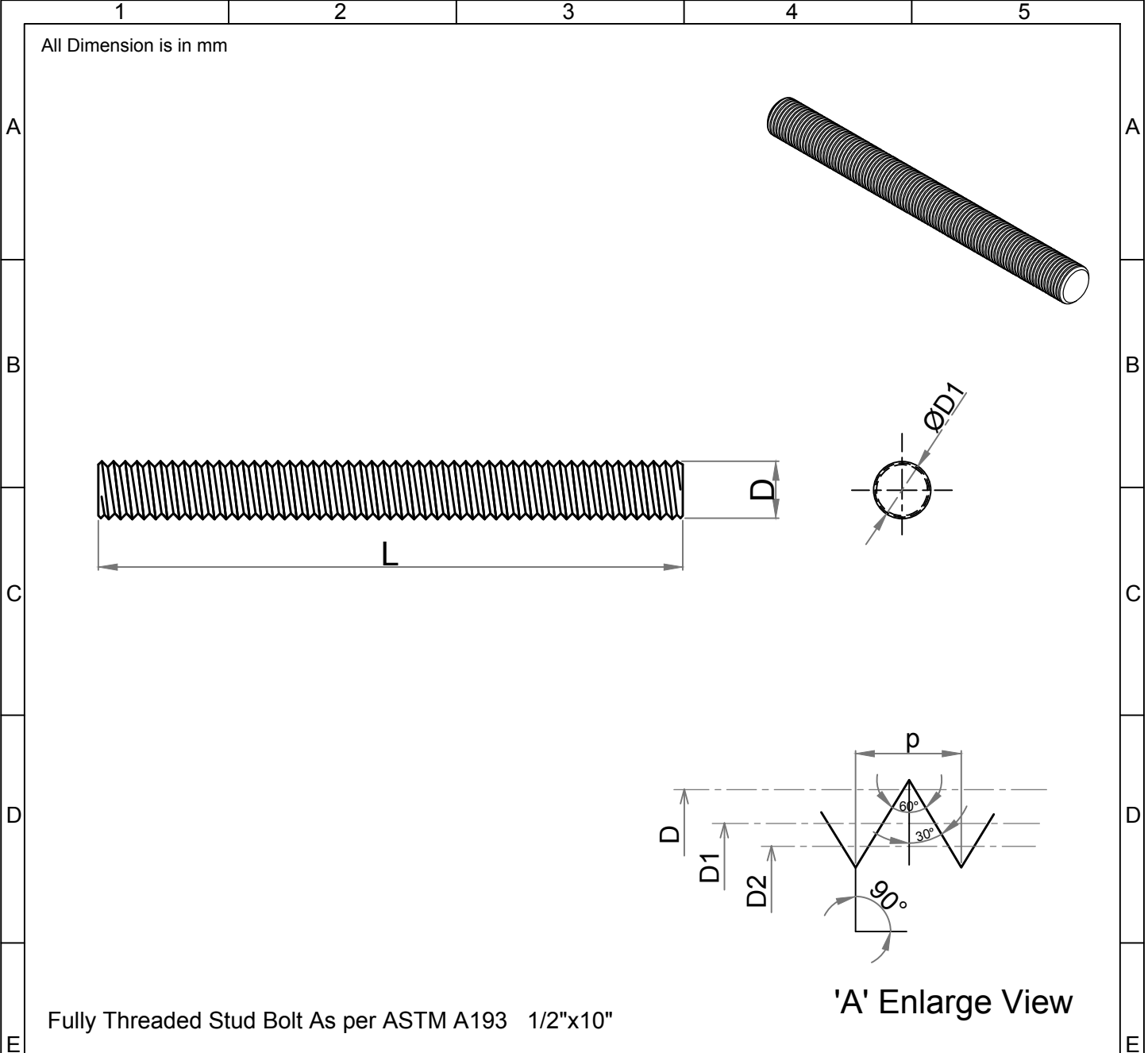


Note: This Drawing is the property of Kapil Enterprises-Kundli, and must not be copied or reproduced without permission or Written authorisation by Kapil Enterprises-Kundli



Fully Threaded Stud Bolt As per ASTM A193 1/2"x10"

'A' Enlarge View

Parameters	Symbol	Minimum	Maximum	Drawing No.- KE-BASE-2200-00026-B18.1.1-A193-B7M-1/2x10		
				Dimension as per		B18.1.1
Total Length	L	254.00	257.00	Chemical & Mechanical properties as per		ASTM A193
Threading Length	l	F.T	F.T	Grade		B7M
Major diameter	D	12.39	12.66	Title		Stud Bolt
Pitch diameter	D1	11.26	11.39	Size	1/2"x10"	Status- <b>Approved</b>
Minor diameter	D2	10.26	-	Dated	18.05.2018	Proj.
Chamfer	u	0.00	4.00	Mass/Weight	0.20449 kg/piece	
Thread per Inch	TPI	13 UNC				
Thread tolerance class	C	2A				
Amendment				Drawn By	Checked By	Approved By
Details	Revision No.	Dated	Authorised by	Pankaj Kumar (Ass. QC Manager)	Santosh Kumar (Plant Head-GM)	Kapil Aggarwal CEO-MD
					<b>Kapil Enterprises</b> 330 EHTP, HSIIDC, Kundli Industrial Estate Sonapat - Haryana-131028, Ph:9811009061 Email:sales@bigboltnut.com, kapil@roll-fast.com	