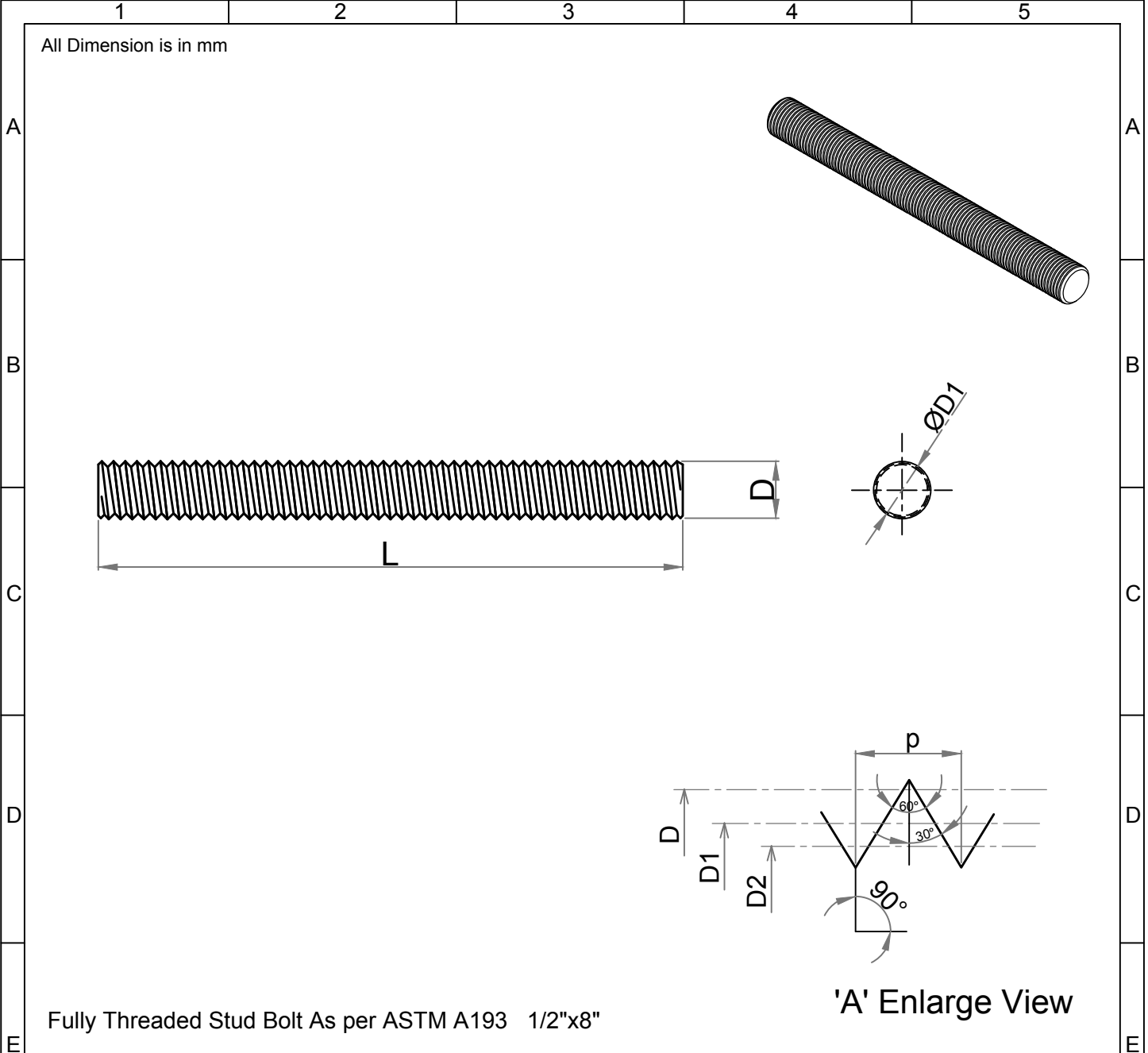


Note: This Drawing is the property of Kapil Enterprises-Kundli, and must not be copied or reproduced without permission or Written authorisation by Kapil Enterprises-Kundli



Fully Threaded Stud Bolt As per ASTM A193 1/2"x8"

| Parameters | Symbol | Minimum | Maximum | Drawing No.- KE-BASE-2200-00022-B18.1.1-A193-B7M-1/2x8 | | |
|------------------------|--------------|---------|---------------|--|--|---|
| | | | | Dimension as per B18.1.1 | | |
| Total Length | L | 203.20 | 206.20 | Chemical & Mechanical properties as per ASTM A193 | | |
| Threading Length | l | F.T | F.T | Grade B7M | | |
| Major diameter | D | 12.39 | 12.66 | Title Stud Bolt | | |
| Pitch diameter | D1 | 11.26 | 11.39 | Size 1/2"x8" | Status- Approved | |
| Minor diameter | D2 | 10.26 | - | Dated 18.05.2018 | Proj. | |
| Chamfer | u | 0.00 | 4.00 | Mass/Weight 0.16359 kg/piece | | |
| Thread per Inch | TPI | 13 UNC | | | | |
| Thread tolerance class | C | 2A | | | | |
| Amendment | | | | Drawn By Pankaj Kumar (Ass. QC Manager) | Checked By Santosh Kumar (Plant Head-GM) | Approved By Kapil Aggarwal CEO-MD |
| Details | Revision No. | Dated | Authorised by | Kapil Enterprises 330 EHTP, HSIIDC, Kundli Industrial Estate Sonapat - Haryana-131028, Ph:9811009061 Email:sales@bigboltnut.com, kapil@roll-fast.com | | |
| | | | | | | |
| | | | | | | |
| | | | | | | |
| | | | | | | |