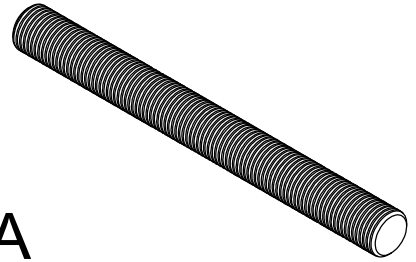


A B C D E F

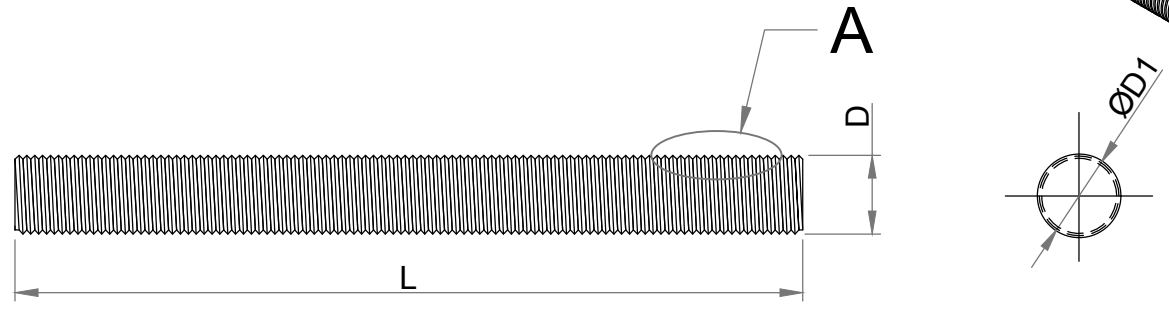
Parameters	Symbol	Minimum	Maximum
Total Length	L	152.40	155.40
Threading Length	l	F.T	F.T
Major diameter	D	34.39	34.87
Pitch diameter	D1	32.62	32.81
Minor diameter	D2	30.97	0.00
Chamfer	u	0.00	7.00
Thread per Inch	TPI	8 UNC	

1



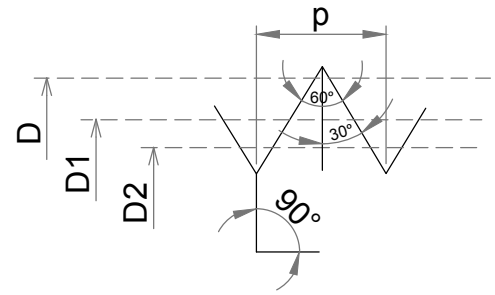
1

2



2

3



3

Dimension as per	B 18.1.1
Chemical & Mechanical properties as per	ASTM A193
Thread tolerance class (C)	2A
Grade	B7
Weight	0.96167 kg/piece

'A' Enlarge View

4

Drawing Number KE-BASE-2200-00200-B18.1.1-A193-B7-1.3/8x6			SIZE 1.3/8"x6"	TITLE Stud Bolt				
AMMENDMENT			Date - 24.07.2018	DIMENSIONS ARE IN MILLIMETERS			Approved By Kapil Aggarwal CEO-MD	
DETAILS	REVISION	DATE	Big Bolt Nut	ROLL FAST	Drawn By Pankaj Kumar (Sr. QC Manager)			
REMOVE SHARP EDGES & BURRS	SHEET SIZE A4	SCALE NTS			Checked BY Approved By Santosh Kumar			
FASTENERS FOR WIND ENERGY ANCHOR BOLTS & FOUNDATION BOLTS			APPROVED	PRECISION TURNED COMPONENTS			KAPIL ENTERPRISES 330 EHTP, HSSIIDC, Kundli Industrial Estate Sonapat-Haryana-131028, Ph:9811009061 Email:-sales@bigboltnut.com, kapil@roll-fast.com	

5

5

A B C D E F