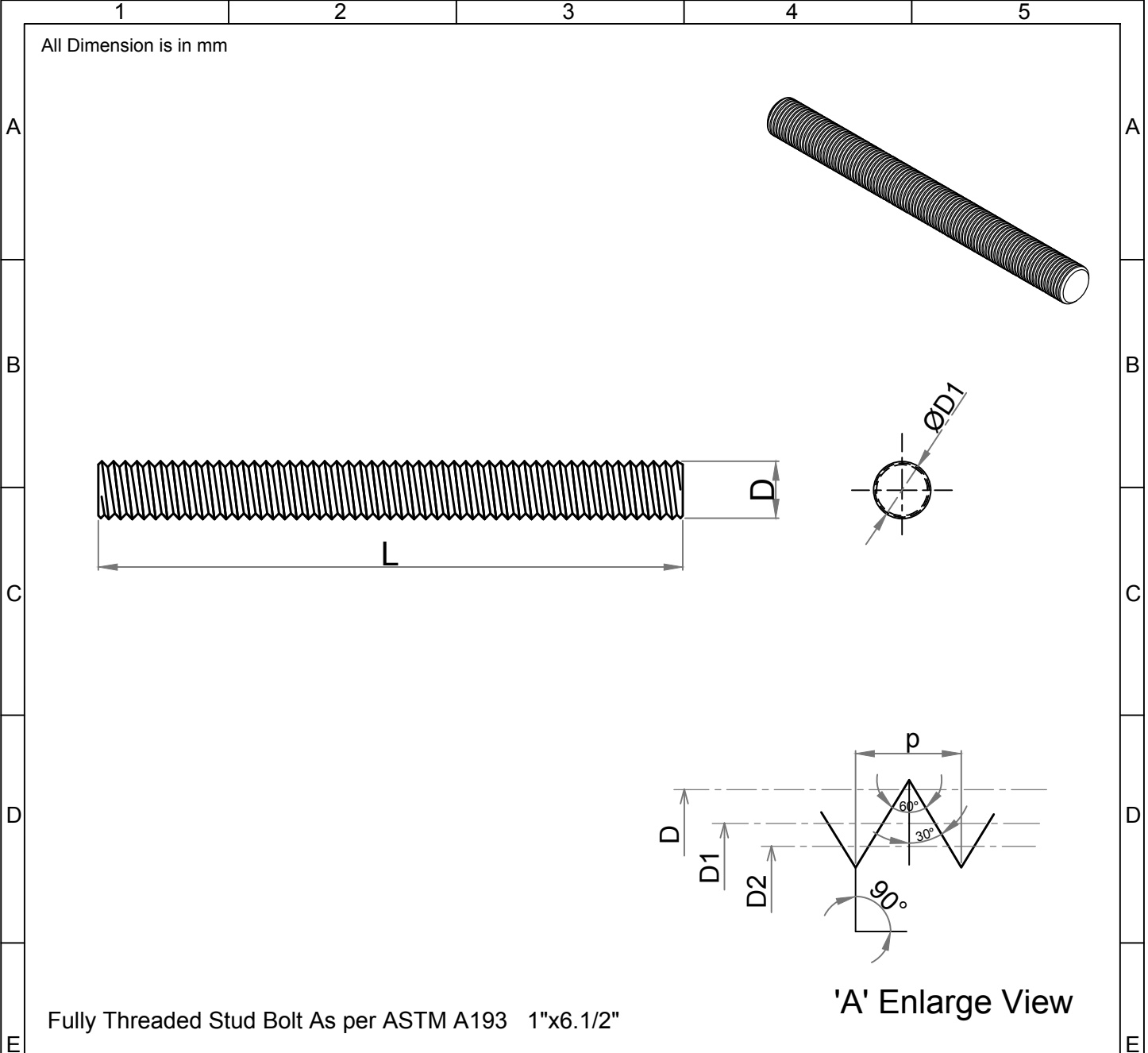


Note: This Drawing is the property of Kapil Enterprises-Kundli, and must not be copied or reproduced without permission or Written authorisation by Kapil Enterprises-Kundli



Fully Threaded Stud Bolt As per ASTM A193 1"x6.1/2"

Parameters	Symbol	Minimum	Maximum	Drawing No.- <b>KE-BASE-2200-00127-B18.1.1-A193-B7-1x6.1/2</b>	
				Dimension as per B18.1.1	
Total Length	L	165.10	168.10	Chemical & Mechanical properties as per ASTM A193	
Threading Length	I	F.T	F.T	Grade B7	
Major diameter	D	24.96	25.35	Title Stud Bolt	
Pitch diameter	D1	23.11	23.29	Size	1"x6.1/2" Status- <b>Approved</b>
Minor diameter	D2	21.45	-	Dated	13.06.2018 Proj.
Chamfer	u	0.00	6.00	Mass/Weight	0.55518 kg/piece
Thread per Inch	TPI	8 UNC		 Drawn By Pankaj Kumar (Ass. QC Manager)	 Checked By Santosh Kumar (Plant Head-GM)
Thread tolerance class	C	2A			
Amendment				 <b>Kapil Enterprises</b> 330 EHTP, HSIIDC, Kundli Industrial Estate Sonapat - Haryana-131028, Ph:9811009061 Email:sales@bigboltnut.com, kapil@roll-fast.com	
Details	Revision No.	Dated	Authorised by		