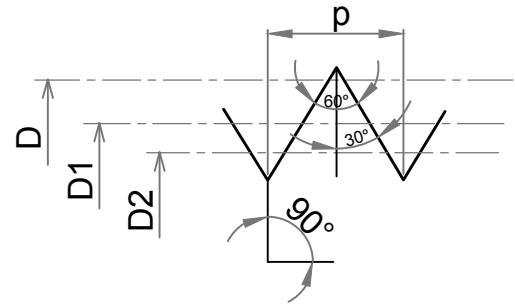
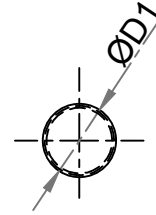
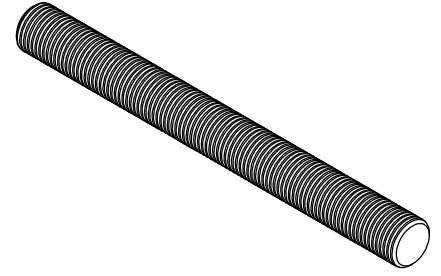
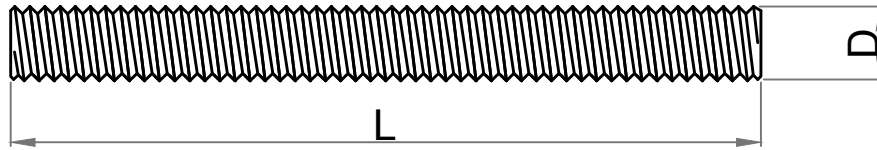



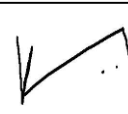

Note: This Drawing is the property of Kapil Enterprises-Kundli, and must not be copied or reproduced without permission or Written authorisation by Kapil Enterprises-Kundli

All Dimension is in mm



'A' Enlarge View

Fully Threaded Stud Bolt As per ASTM A193 1/2"x8"

Parameters	Symbol	Minimum	Maximum	Drawing No.- KE-BASE-2200-00022-B18.1.1-A193-B7-1/2x8	
				Dimension as per	B18.1.1
Total Length	L	203.20	206.20	Chemical & Mechanical properties as per	ASTM A193
Threading Length	l	F.T	F.T	Grade	B7
Major diameter	D	12.39	12.66	Title	Stud Bolt
Pitch diameter	D1	11.26	11.39	Size	1/2"x8"
Minor diameter	D2	10.26	-	Dated	18.05.2018
Chamfer	u	0.00	4.00	Mass/Weight	0.16359 kg/piece
Thread per Inch	TPI	13 UNC		<div style="display: flex; justify-content: space-around;"> <div style="text-align: center;">  Drawn By Pankaj Kumar (Ass. QC Manager) </div> <div style="text-align: center;">  Checked By Santosh Kumar (Plant Head-GM) </div> <div style="text-align: center;">  Approved By Kapil Aggarwal CEO-MD </div> </div>	
Thread tolerance class	C	2A			
Amendment					
Details	Revision No.	Dated	Authorised by		
				Kapil Enterprises 330 EHTP, HSIIDC, Kundli Industrial Estate Sonapat - Haryana-131028, Ph:9811009061 Email:sales@bigboltnut.com, kapil@roll-fast.com	