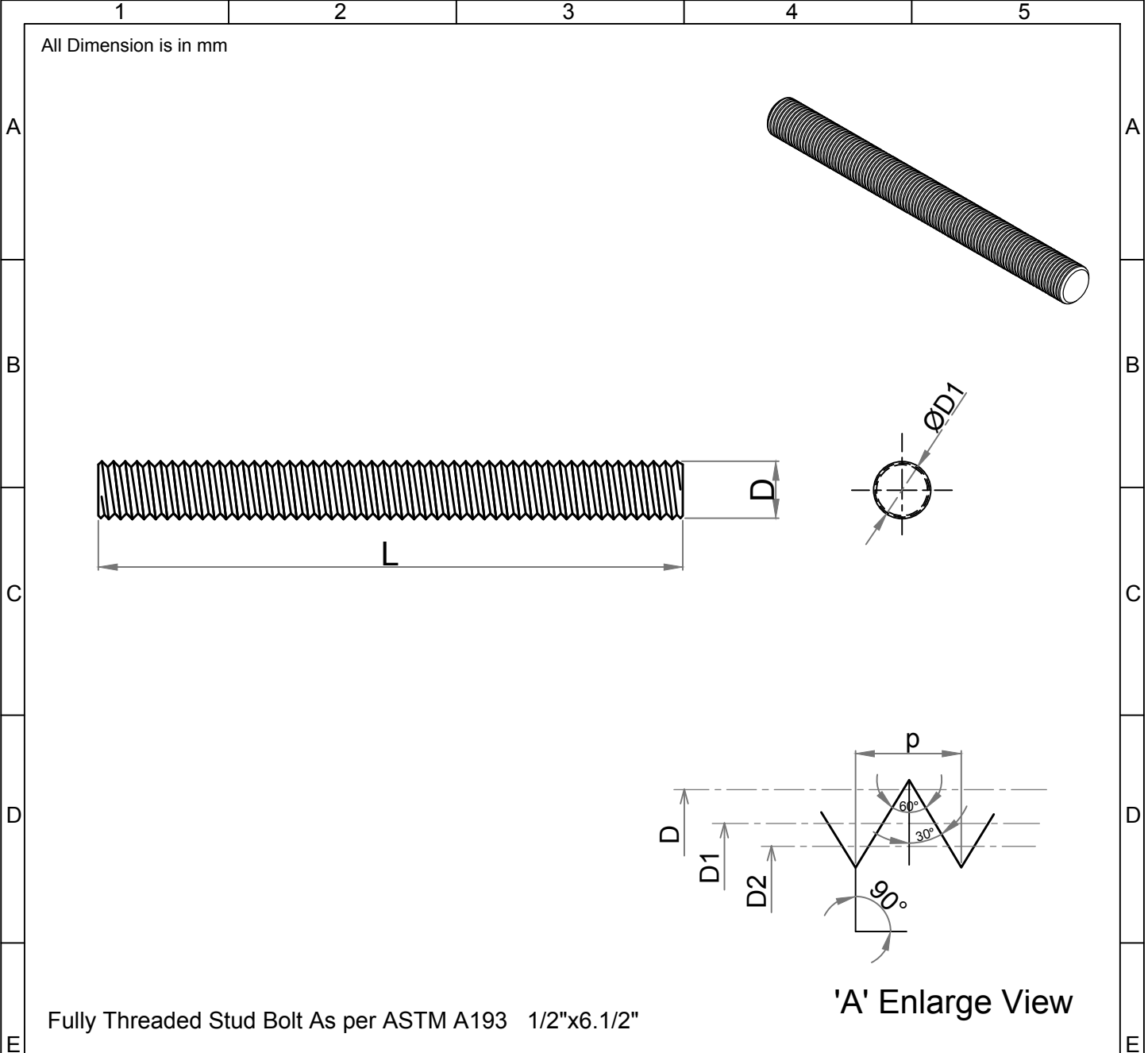


Note: This Drawing is the property of Kapil Enterprises-Kundli, and must not be copied or reproduced without permission or Written authorisation by Kapil Enterprises-Kundli



Fully Threaded Stud Bolt As per ASTM A193 1/2"x6.1/2" 'A' Enlarge View

Parameters	Symbol	Minimum	Maximum	Drawing No.- KE-BASE-2200-00018-B18.1.1-A193-B7-1/2x6.1/2	
				Dimension as per B18.1.1	
Total Length	L	165.10	168.10	Chemical & Mechanical properties as per ASTM A193	
Threading Length	I	F.T	F.T	Grade B7	
Major diameter	D	12.39	12.66	Title Stud Bolt	
Pitch diameter	D1	11.26	11.39	Size	1/2"x6.1/2"
Minor diameter	D2	10.26	-	Status- Approved	
Chamfer	u	0.00	4.00	Dated	18.05.2018
Thread per Inch	TPI	13 UNC		Mass/Weight	0.13292 kg/piece
Thread tolerance class	C	2A			
Amendment				Drawn By	Checked By
Details	Revision No.	Dated	Authorised by	Pankaj Kumar (Ass. QC Manager)	Santosh Kumar (Plant Head-GM)
				Kapil Enterprises 330 EHTP, HSIIDC, Kundli Industrial Estate Sonapat - Haryana-131028, Ph:9811009061 Email:sales@bigboltnut.com, kapil@roll-fast.com	