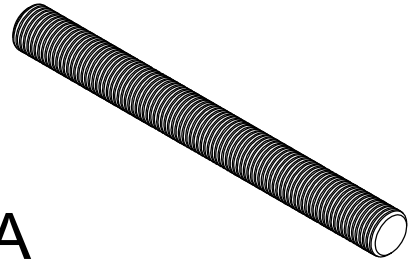


A B C D E F

Parameters	Symbol	Minimum	Maximum
Total Length	L	228.60	231.60
Threading Length	l	F.T	F.T
Major diameter	D	63.06	63.44
Pitch diameter	D1	61.16	61.36
Minor diameter	D2	59.54	-
Chamfer	u	0.00	12.00
Thread per Inch	TPI	8 UNC	

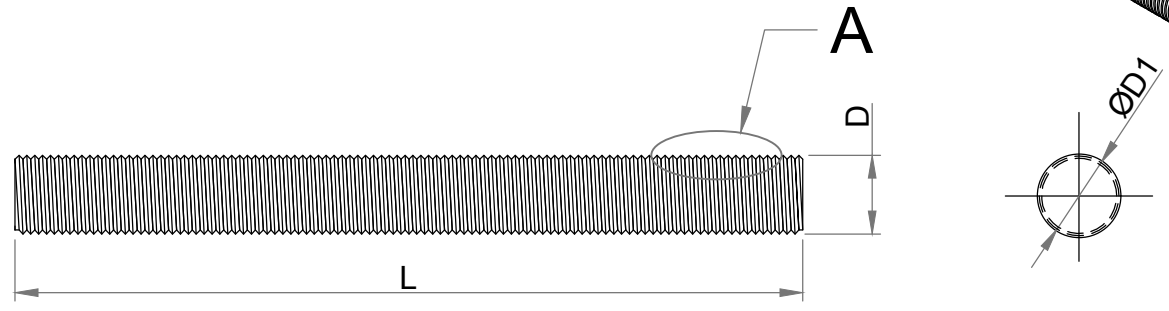
1

1



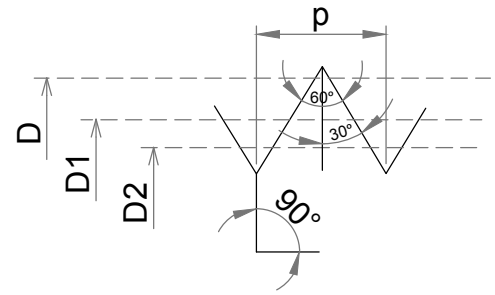
2

2



3

3



'A' Enlarge View

Dimension as per	B 18.1.1
Chemical & Mechanical properties as per	ASTM A193
Thread tolerance class (C)	2A
Grade	B16
Weight	4.93365 kg/piece

4

4

Drawing Number KE-BASE-2200-00358-B18.1.1-A193-B16-2.1/2x9		SIZE 2.1/2"x9"	TITLE Stud Bolt			
AMMENDMENT		Date - 02.08.2018	DIMENSIONS ARE IN MILLIMETERS			Approved By Kapil Aggarwal CEO-MD
DETAILS	REVISION	DATE	APPROVED	ROLL FAST STAINLESS STEEL BOLTS HIGH TENSILE BOLTS PRECISION TURNED COMPONENTS	KAPIL ENTERPRISES 330 EHTP, HSSIIDC, Kundli Industrial Estate Sonapat-Haryana-131028, Ph:9811009061 Email:-sales@bigboltnut.com, kapil@roll-fast.com	Drawn By Pankaj Kumar (Sr. QC Manager)
REMOVE SHARP EDGES & BURRS	SHEET SIZE A4	SCALE NTS				Checked BY Approved By Santosh Kumar

5

5

A B C D E F