

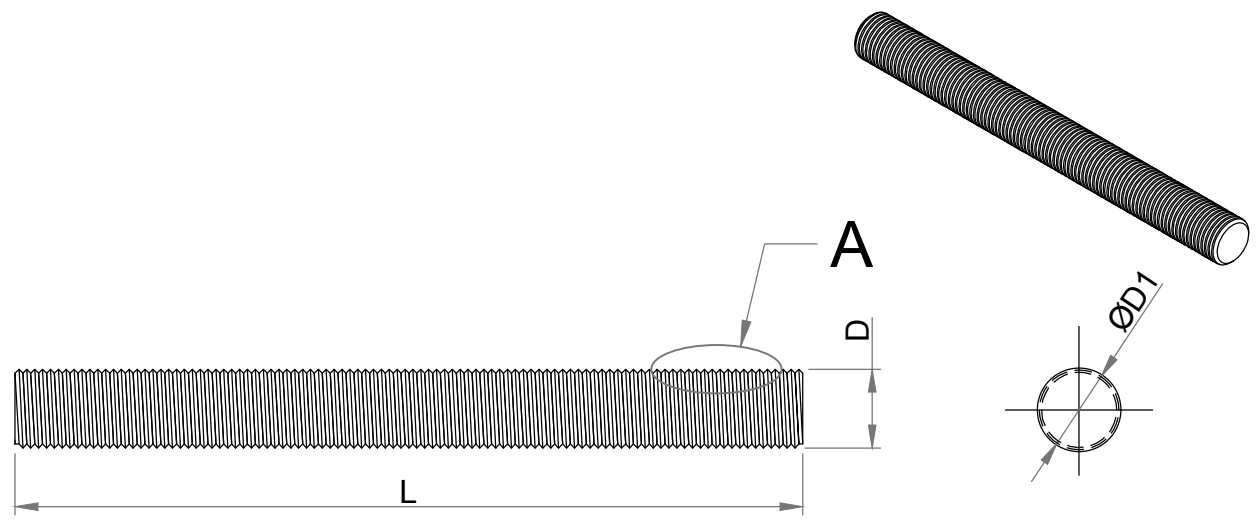
A B C D E F

Parameters	Symbol	Minimum	Maximum
Total Length	L	95.25	98.25
Threading Length	l	F.T	F.T
Major diameter	D	47.19	47.57
Pitch diameter	D1	45.31	45.50
Minor diameter	D2	43.67	-
Chamfer	u	0.00	10.00
Thread per Inch	TPI	8 UNC	

1

2

3

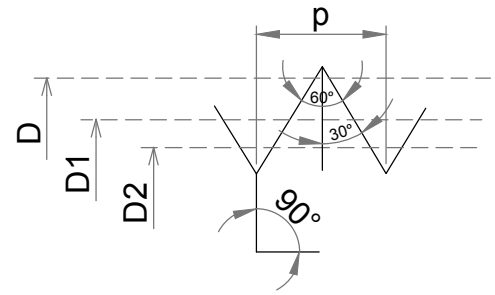


1

2

Dimension as per	B 18.1.1
Chemical & Mechanical properties as per	ASTM A193
Thread tolerance class (C)	2A
Grade	B16
Weight	1.22259 kg/piece

4



'A' Enlarge View

3

4

Drawing Number KE-BASE-2200-00266-B18.1.1-A193-B16-1.7/8x3.3/4			SIZE 1.7/8"x3.3/4"	TITLE Stud Bolt			
AMMENDMENT			Date - 02.08.2018	DIMENSIONS ARE IN MILLIMETERS			Approved By Kapil Aggarwal CEO-MD
DETAILS	REVISION	DATE	Big Bolt Nut	ROLL FAST	STAINLESS STEEL BOLTS	HIGH TENSILE BOLTS	Drawn By Pankaj Kumar (Sr. QC Manager)
REMOVE SHARP EDGES & BURRS	SHEET SIZE A4	SCALE NTS					Checked BY Approved By Santosh Kumar
			FASTENERS FOR WIND ENERGY	PRECISION TURNED COMPONENTS	KAPIL ENTERPRISES		
			ANCHOR BOLTS & FOUNDATION BOLTS		330 EHTP, HSSIIDC, Kundli Industrial Estate Sonepat-Haryana-131028, Ph:9811009061 Email:-sales@bigboltnut.com, kapil@roll-fast.com		

5

5

A B C D E F