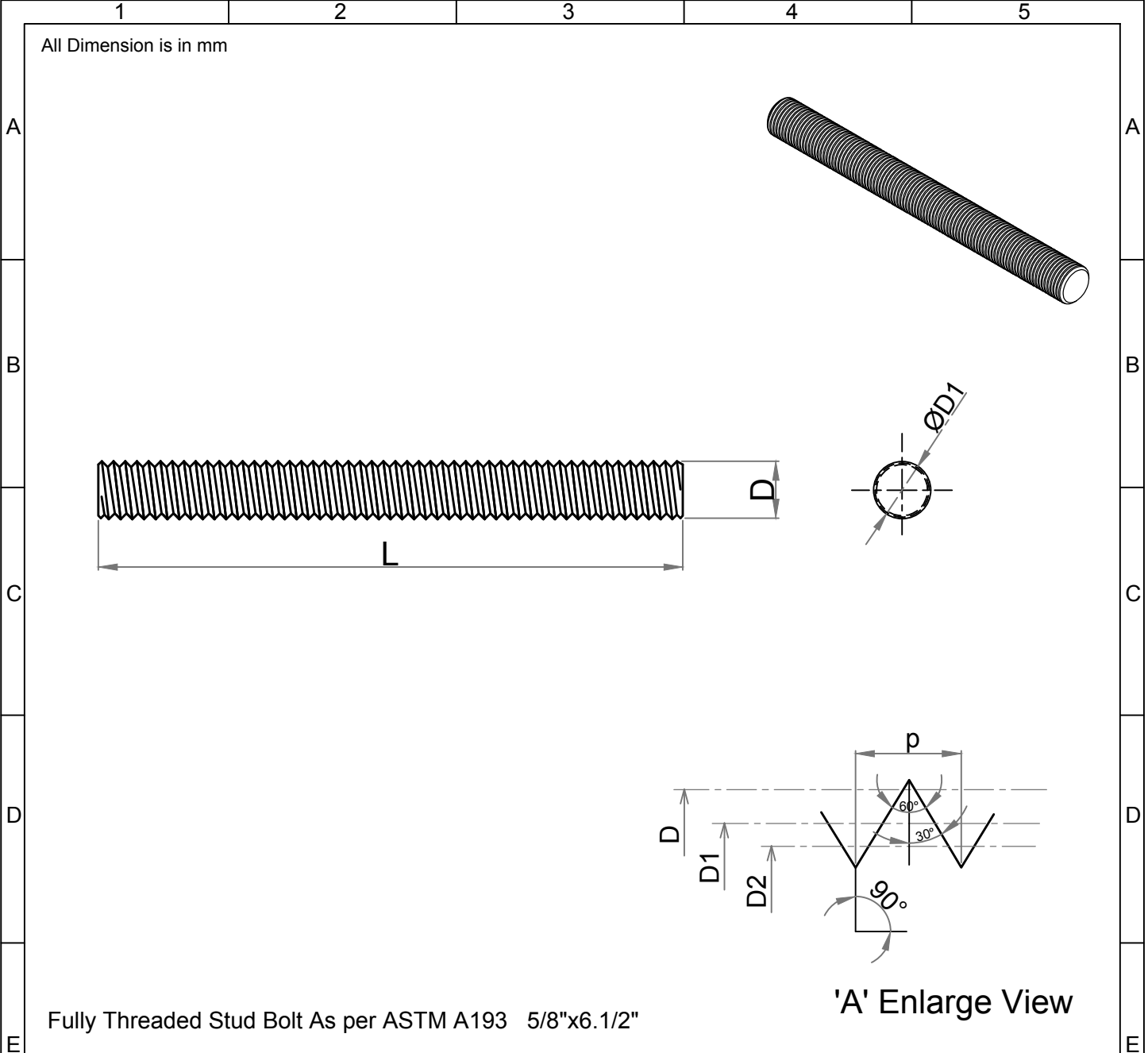


Note: This Drawing is the property of Kapil Enterprises-Kundli, and must not be copied or reproduced without permission or Written authorisation by Kapil Enterprises-Kundli



Fully Threaded Stud Bolt As per ASTM A193 5/8"x6.1/2"

Parameters	Symbol	Minimum	Maximum	Drawing No.- KE-BASE-2200-00048-B18.1.1-A193-B16-5/8x6.1/2		
				Dimension as per B18.1.1		
Total Length	L	165.10	168.10	Chemical & Mechanical properties as per ASTM A193		
Threading Length	l	F.T	F.T	Grade B16		
Major diameter	D	15.53	15.83	Title Stud Bolt		
Pitch diameter	D1	14.20	14.34	Size 5/8"x6.1/2"		
Minor diameter	D2	13.00	-	Status- Approved		
Chamfer	u	0.00	5.00	Dated 18.05.2018	Proj.	
Thread per Inch	TPI	11 UNC		Mass/Weight 0.21302 kg/piece		
Thread tolerance class	C	2A				
Amendment						
Details		Revision No.	Dated	Authorised by	Drawn By Pankaj Kumar (Ass. QC Manager)	Checked By Santosh Kumar (Plant Head-GM)
						Kapil Enterprises 330 EHTP, HSIIDC, Kundli Industrial Estate Sonapat - Haryana-131028, Ph:9811009061 Email:sales@bigboltnut.com, kapil@roll-fast.com