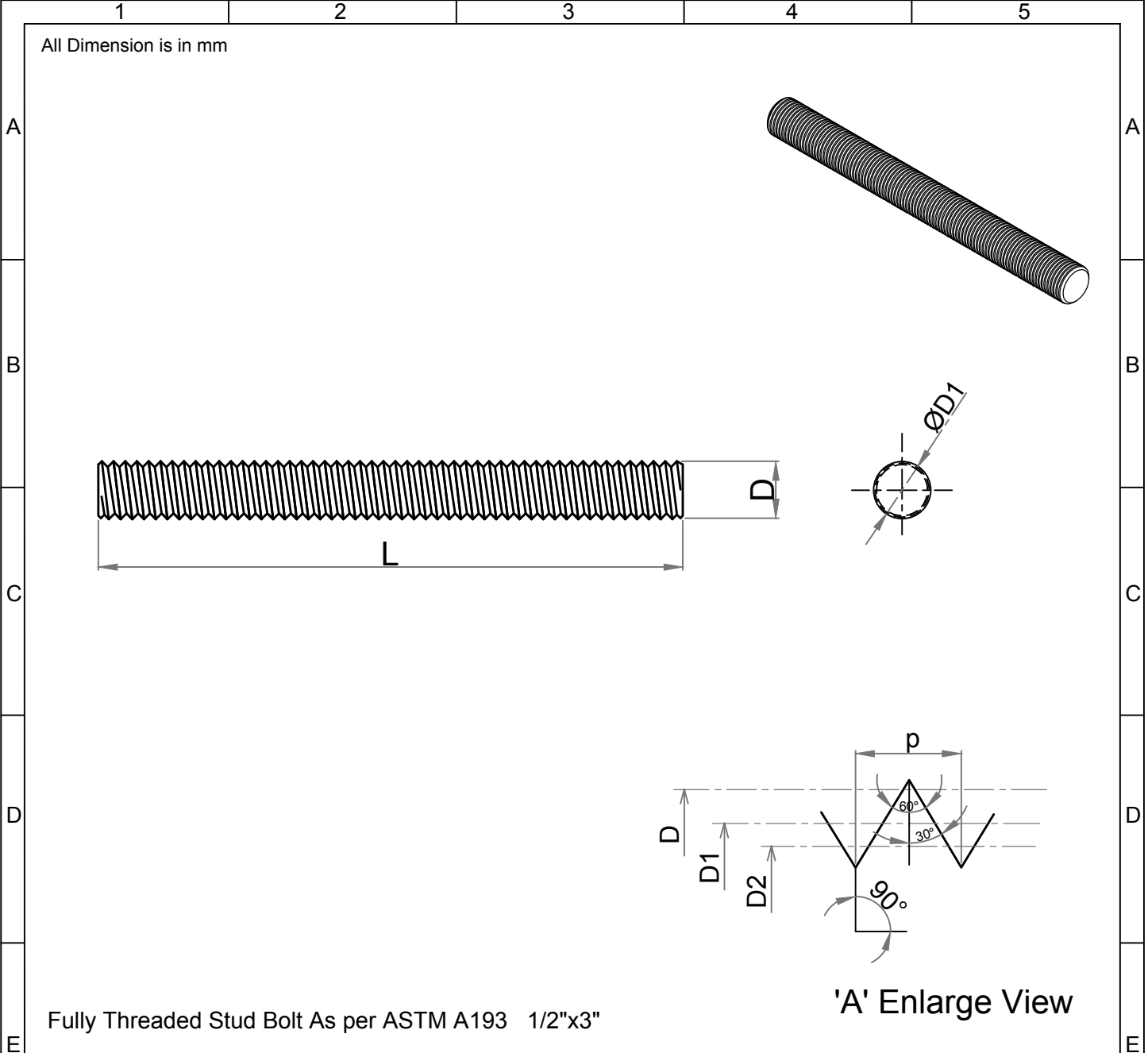


Note: This Drawing is the property of Kapil Enterprises-Kundli, and must not be copied or reproduced without permission or Written authorisation by Kapil Enterprises-Kundli



Fully Threaded Stud Bolt As per ASTM A193 1/2"x3"

Parameters	Symbol	Minimum	Maximum	Drawing No.- KE-BASE-2200-00004-B18.1.1-A193-B16-1/2x3	
				Dimension as per B18.1.1	
Total Length	L	76.20	79.20	Chemical & Mechanical properties as per ASTM A193	
Threading Length	I	F.T	F.T	Grade B16	
Major diameter	D	12.39	12.66	Title Stud Bolt	
Pitch diameter	D1	11.26	11.39	Size	1/2"x3" Status- Approved
Minor diameter	D2	10.26	-	Dated	18.05.2018 Proj.
Chamfer	u	0.00	4.00	Mass/Weight	0.06135 kg/piece
Thread per Inch	TPI	13 UNC		 Drawn By Pankaj Kumar (Ass. QC Manager)	 Checked By Santosh Kumar (Plant Head-GM)
Thread tolerance class	C	2A			
Amendment				 Kapil Enterprises 330 EHTP, HSIIDC, Kundli Industrial Estate Sonapat - Haryana-131028, Ph:9811009061 Email:sales@bigboltnut.com, kapil@roll-fast.com	
Details	Revision No.	Dated	Authorised by		