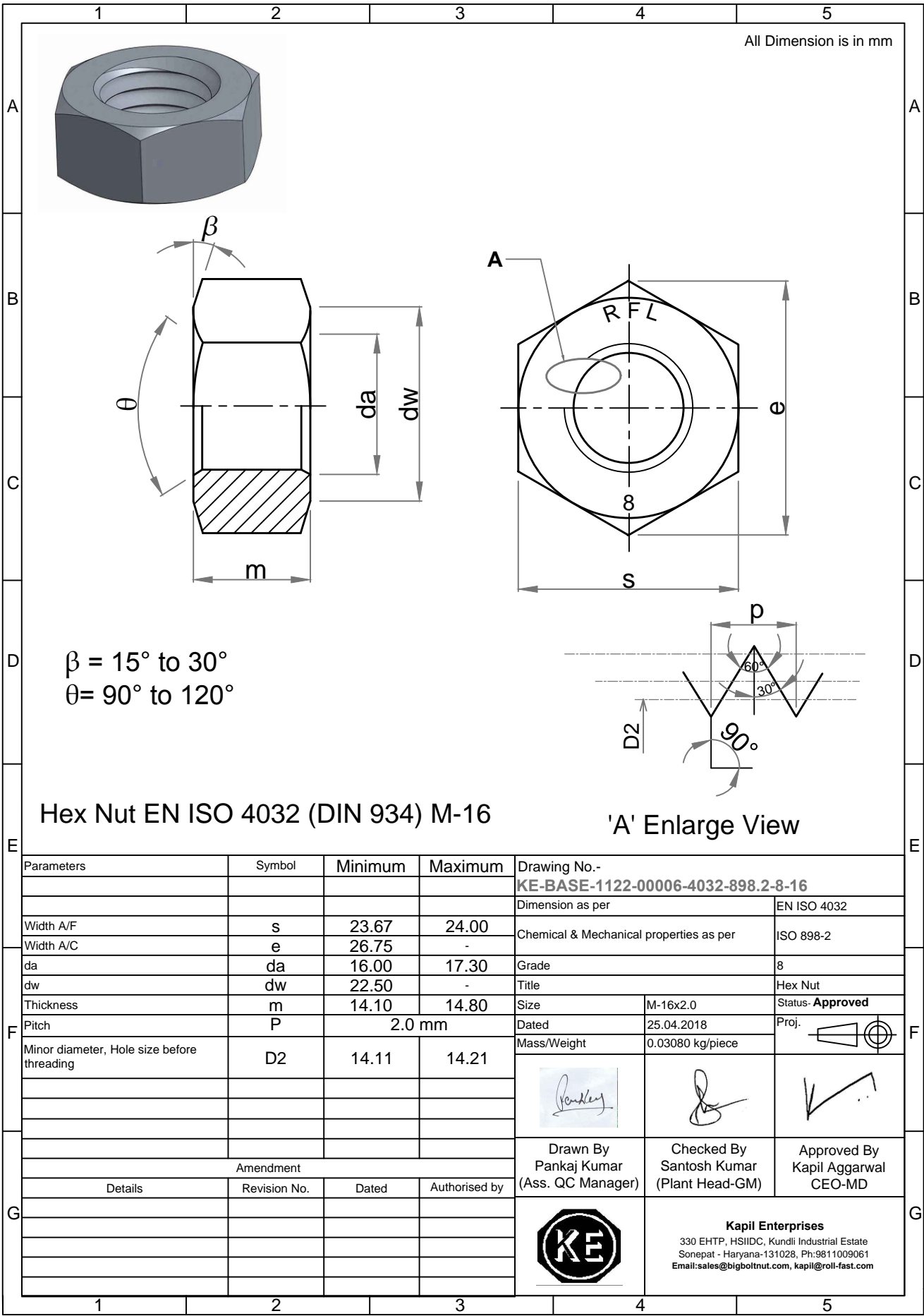


Note: This Drawing is the property of Kapil Enterprises-Kundli, and must not be copied or reproduced without permission or Written authorisation by Kapil Enterprises-Kundli



All Dimension is in mm

$\beta = 15^\circ \text{ to } 30^\circ$
 $\theta = 90^\circ \text{ to } 120^\circ$

Hex Nut EN ISO 4032 (DIN 934) M-16

'A' Enlarge View

Parameters	Symbol	Minimum	Maximum
Width A/F	s	23.67	24.00
Width A/C	e	26.75	-
da	da	16.00	17.30
dw	dw	22.50	-
Thickness	m	14.10	14.80
Pitch	P	2.0 mm	
Minor diameter, Hole size before threading	D2	14.11	14.21
Amendment			
Details	Revision No.	Dated	Authorised by

Drawing No.- KE-BASE-1122-00006-4032-898.2-8-16	
Dimension as per	EN ISO 4032
Chemical & Mechanical properties as per	ISO 898-2
Grade	8
Title	Hex Nut
Size	M-16x2.0
Dated	25.04.2018
Mass/Weight	0.03080 kg/piece
Proj.	
Drawn By Pankaj Kumar (Ass. QC Manager)	Checked By Santosh Kumar (Plant Head-GM)
Approved By Kapil Aggarwal CEO-MD	
Kapil Enterprises 330 EHTP, HSIIDC, Kundli Industrial Estate Sonapat - Haryana-131028, Ph:9811009061 Email:sales@bigboltnut.com, kapil@roll-fast.com	