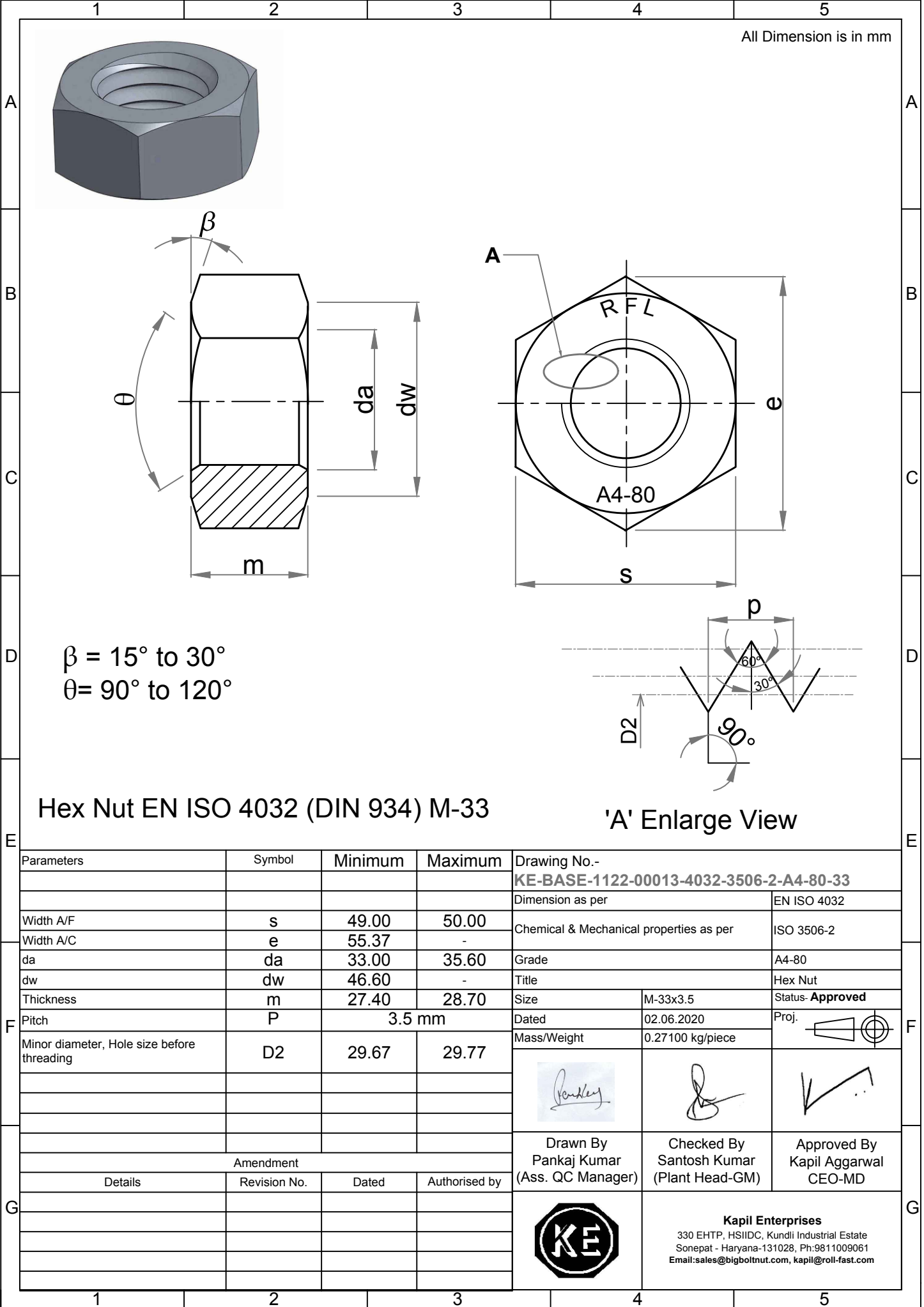


Note: This Drawing is the property of Kapil Enterprises-Kundli, and must not be copied or reproduced without permission or Written authorisation by Kapil Enterprises-Kundli



All Dimension is in mm

$\beta = 15^\circ \text{ to } 30^\circ$
 $\theta = 90^\circ \text{ to } 120^\circ$

Hex Nut EN ISO 4032 (DIN 934) M-33

'A' Enlarge View

Parameters	Symbol	Minimum	Maximum	Drawing No.- KE-BASE-1122-00013-4032-3506-2-A4-80-33	
				Dimension as per EN ISO 4032	
Width A/F	s	49.00	50.00	Chemical & Mechanical properties as per ISO 3506-2	
Width A/C	e	55.37	-	Grade A4-80	
da	da	33.00	35.60	Title Hex Nut	
dw	dw	46.60	-	Size M-33x3.5	
Thickness	m	27.40	28.70	Status- Approved	
Pitch	P	3.5 mm		Dated	02.06.2020
Minor diameter, Hole size before threading	D2	29.67	29.77	Mass/Weight	0.27100 kg/piece
				Proj.	
Amendment				Drawn By Pankaj Kumar (Ass. QC Manager) Checked By Santosh Kumar (Plant Head-GM) Approved By Kapil Aggarwal CEO-MD	
Details	Revision No.	Dated	Authorised by	 Kapil Enterprises 330 EHTP, HSIIDC, Kundli Industrial Estate Sonapat - Haryana-131028, Ph:9811009061 Email:sales@bigboltnut.com, kapil@roll-fast.com	