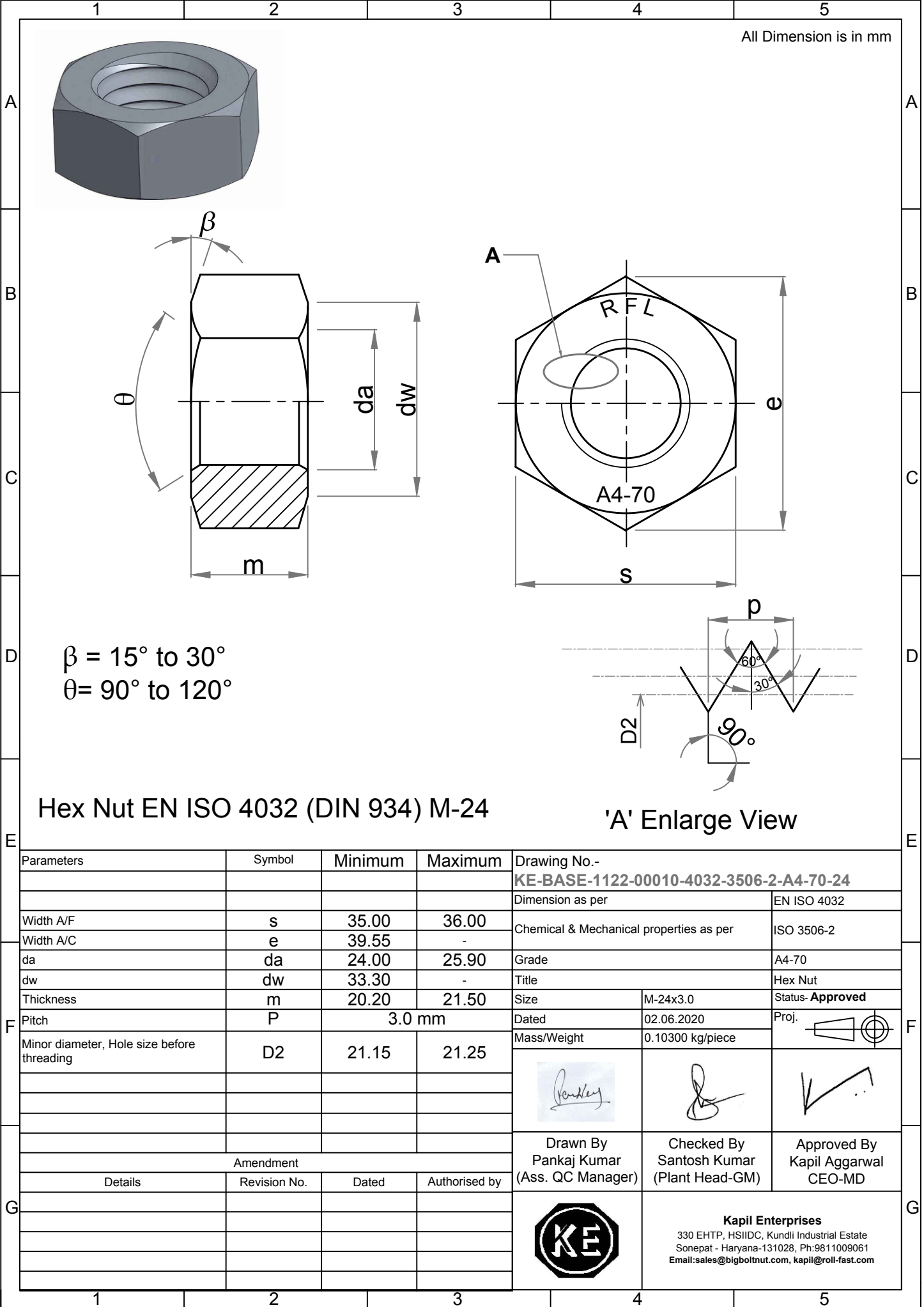


Note: This Drawing is the property of Kapil Enterprises-Kundli, and must not be copied or reproduced without permission or Written authorisation by Kapil Enterprises-Kundli



All Dimension is in mm

$\beta = 15^\circ \text{ to } 30^\circ$
 $\theta = 90^\circ \text{ to } 120^\circ$

Hex Nut EN ISO 4032 (DIN 934) M-24

'A' Enlarge View

Parameters		Symbol	Minimum	Maximum	Drawing No.- KE-BASE-1122-00010-4032-3506-2-A4-70-24	
					Dimension as per	EN ISO 4032
Width A/F	s	35.00	36.00	Chemical & Mechanical properties as per		ISO 3506-2
Width A/C	e	39.55	-	Grade		A4-70
da	da	24.00	25.90	Title		Hex Nut
dw	dw	33.30	-	Size	M-24x3.0	Status- Approved
Thickness	m	20.20	21.50	Dated	02.06.2020	Proj.
Pitch	P	3.0 mm		Mass/Weight	0.10300 kg/piece	
Minor diameter, Hole size before threading	D2	21.15	21.25	<div style="display: flex; justify-content: space-around;"> <div style="text-align: center;"> Drawn By Pankaj Kumar (Ass. QC Manager) </div> <div style="text-align: center;"> Checked By Santosh Kumar (Plant Head-GM) </div> <div style="text-align: center;"> Approved By Kapil Aggarwal CEO-MD </div> </div>		
Amendment						
Details	Revision No.	Dated	Authorised by			
				Kapil Enterprises 330 EHTP, HSIIDC, Kundli Industrial Estate Sonapat - Haryana-131028, Ph:9811009061 Email:sales@bigboltnut.com, kapil@roll-fast.com		