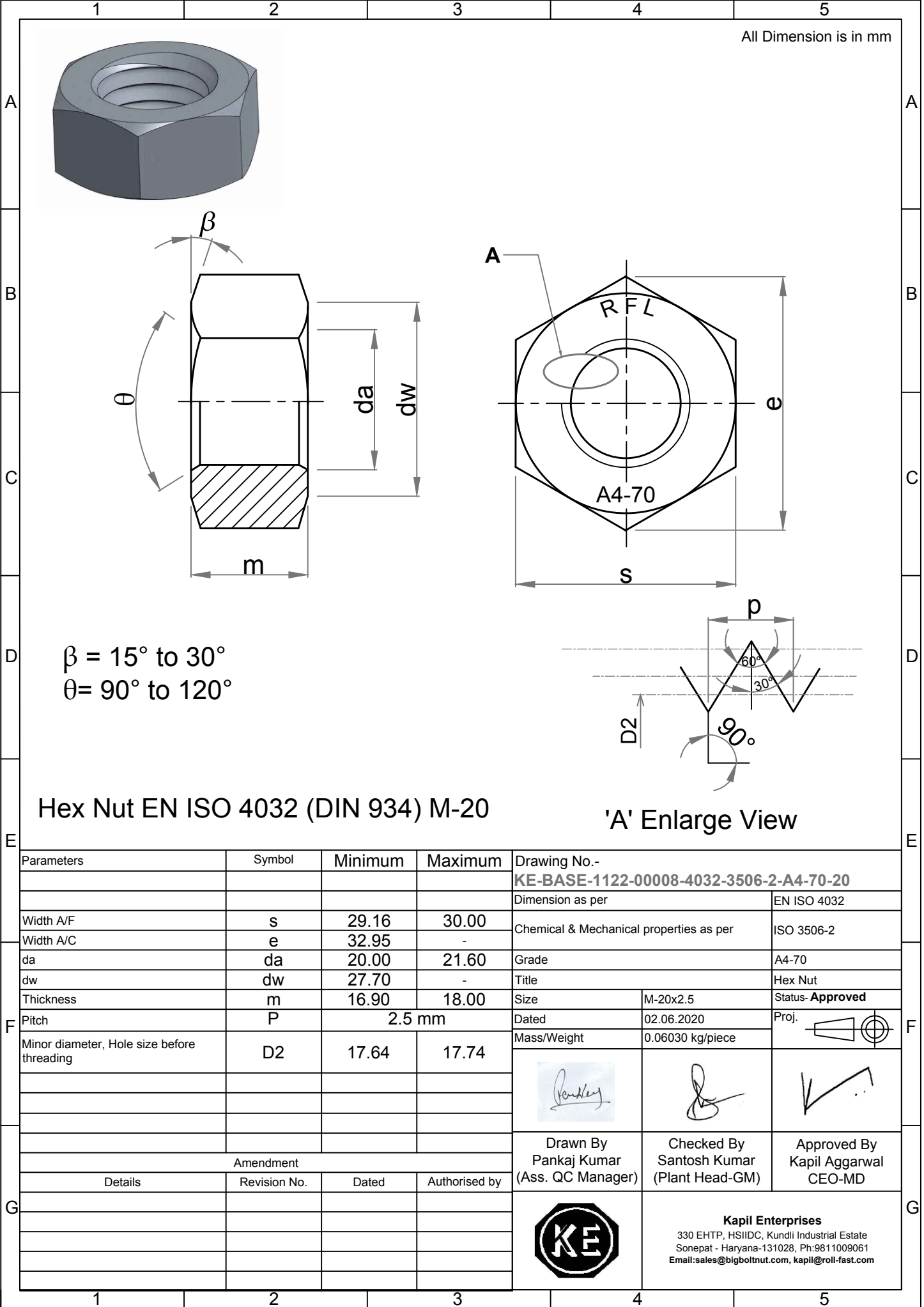


Note: This Drawing is the property of Kapil Enterprises-Kundli, and must not be copied or reproduced without permission or Written authorisation by Kapil Enterprises-Kundli



All Dimension is in mm

$\beta = 15^\circ \text{ to } 30^\circ$
 $\theta = 90^\circ \text{ to } 120^\circ$

Hex Nut EN ISO 4032 (DIN 934) M-20

'A' Enlarge View

Parameters		Symbol	Minimum	Maximum	Drawing No.- KE-BASE-1122-00008-4032-3506-2-A4-70-20	
					Dimension as per EN ISO 4032	
Width A/F		s	29.16	30.00	Chemical & Mechanical properties as per ISO 3506-2	
Width A/C		e	32.95	-	Grade A4-70	
da		da	20.00	21.60	Title Hex Nut	
dw		dw	27.70	-	Size M-20x2.5	
Thickness		m	16.90	18.00	Status- Approved	
Pitch		P	2.5 mm		Dated	02.06.2020
Minor diameter, Hole size before threading		D2	17.64	17.74	Mass/Weight	0.06030 kg/piece
					Proj.	
Amendment					Drawn By Pankaj Kumar (Ass. QC Manager) Checked By Santosh Kumar (Plant Head-GM) Approved By Kapil Aggarwal CEO-MD	
Details		Revision No.	Dated	Authorised by	 Kapil Enterprises 330 EHTP, HSIIDC, Kundli Industrial Estate Sonapat - Haryana-131028, Ph:9811009061 Email:sales@bigboltnut.com, kapil@roll-fast.com	