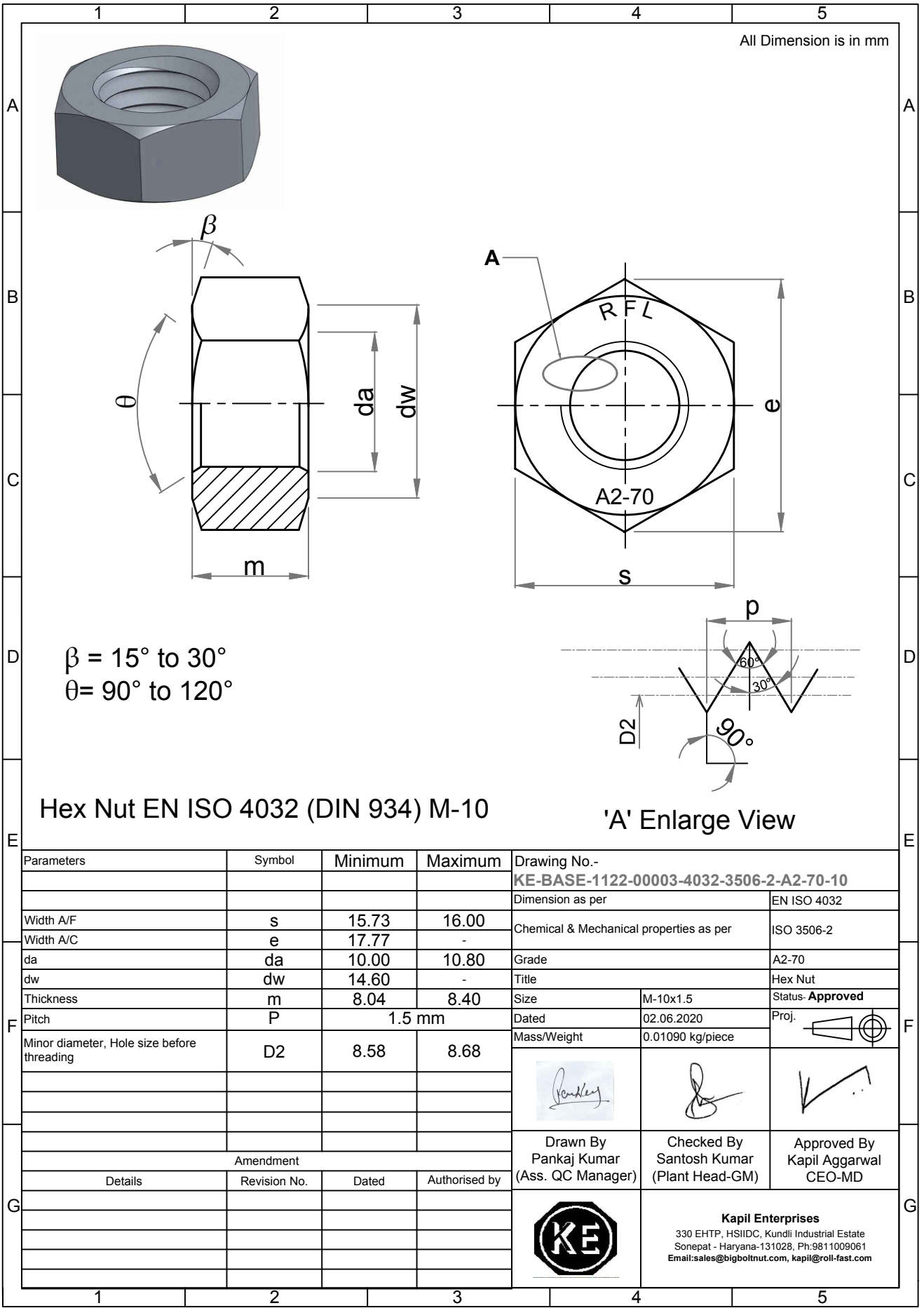


Note: This Drawing is the property of Kapil Enterprises-Kundli, and must not be copied or reproduced without permission or Written authorisation by Kapil Enterprises-Kundli



Hex Nut EN ISO 4032 (DIN 934) M-10

'A' Enlarge View

Parameters	Symbol	Minimum	Maximum
Width A/F	s	15.73	16.00
Width A/C	e	17.77	-
da	da	10.00	10.80
dw	dw	14.60	-
Thickness	m	8.04	8.40
Pitch	P	1.5 mm	
Minor diameter, Hole size before threading	D2	8.58	8.68
Amendment			
Details	Revision No.	Dated	Authorised by

Drawing No.- <b>KE-BASE-1122-00003-4032-3506-2-A2-70-10</b>	
Dimension as per	EN ISO 4032
Chemical & Mechanical properties as per	ISO 3506-2
Grade	A2-70
Title	Hex Nut
Size	M-10x1.5
Status	<b>Approved</b>
Dated	02.06.2020
Mass/Weight	0.01090 kg/piece
Proj.	
Drawn By Pankaj Kumar (Ass. QC Manager)	Checked By Santosh Kumar (Plant Head-GM)
Approved By Kapil Aggarwal CEO-MD	
<b>Kapil Enterprises</b> 330 EHTP, HSIIDC, Kundli Industrial Estate Sonapat - Haryana-131028, Ph:9811009061 Email:sales@bigboltnut.com, kapil@roll-fast.com	