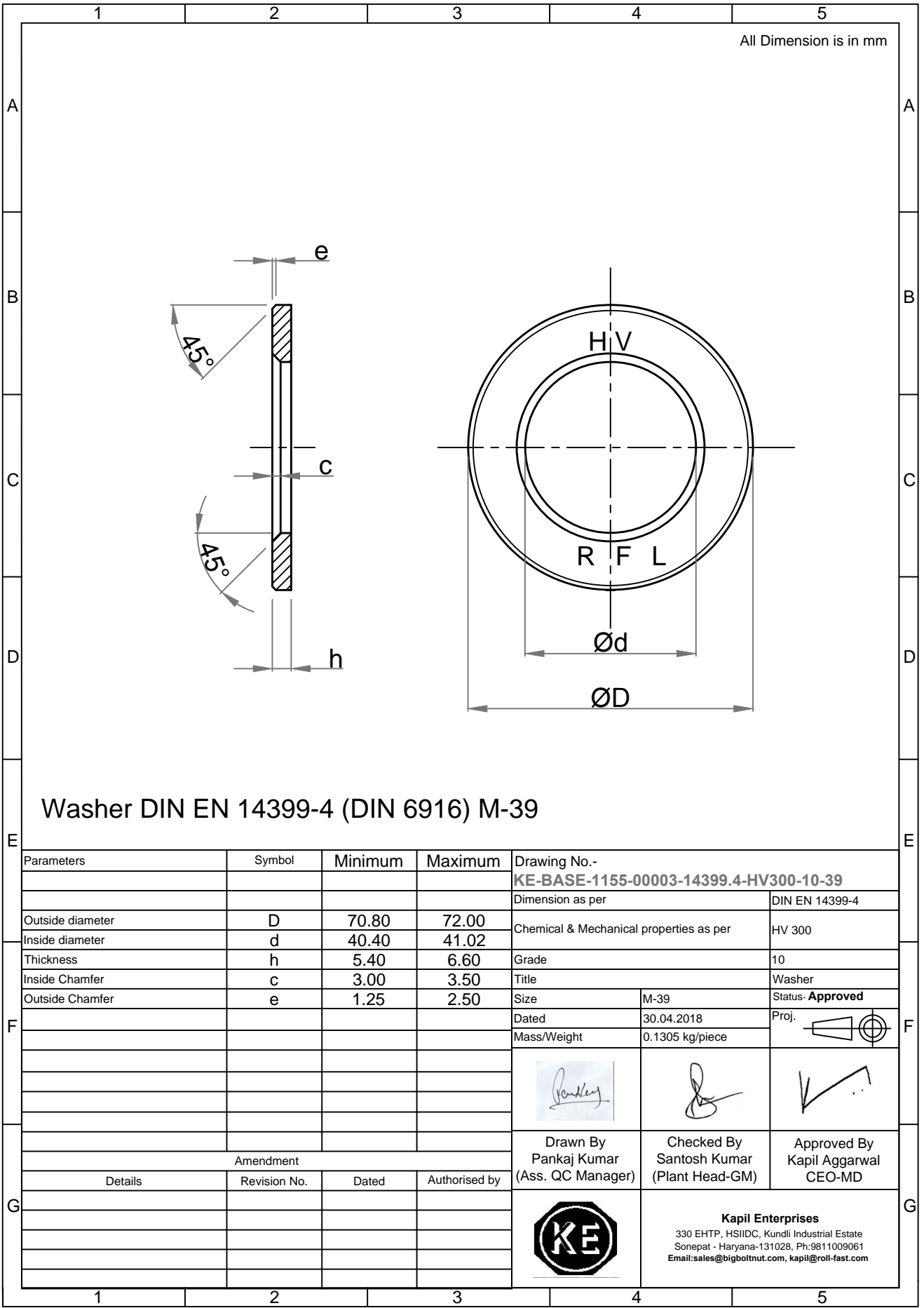


Note: This Drawing is the property of Kapil Enterprises-Kundli, and must not be copied or reproduced without permission or Written authorisation by Kapil Enterprises-Kundli



All Dimension is in mm

Washer DIN EN 14399-4 (DIN 6916) M-39

Parameters	Symbol	Minimum	Maximum	Drawing No.- KE-BASE-1155-00003-14399.4-HV300-10-39	
				Dimension as per	DIN EN 14399-4
Outside diameter	D	70.80	72.00	Chemical & Mechanical properties as per	HV 300
Inside diameter	d	40.40	41.02	Grade	10
Thickness	h	5.40	6.60	Title	Washer
Inside Chamfer	c	3.00	3.50	Size	M-39
Outside Chamfer	e	1.25	2.50	Dated	30.04.2018
				Mass/Weight	0.1305 kg/piece
					Proj.
Amendment				Drawn By	Checked By
Details	Revision No.	Dated	Authorised by	Pankaj Kumar (Ass. QC Manager)	Santosh Kumar (Plant Head-GM)
				Approved By	Kapil Aggarwal CEO-MD
				<p>Kapil Enterprises 330 EHTP, HSIIDC, Kundli Industrial Estate Sonepat - Haryana-131028, Ph:9811009061 Email:sales@bigboltnut.com, kapil@roll-fast.com</p>	