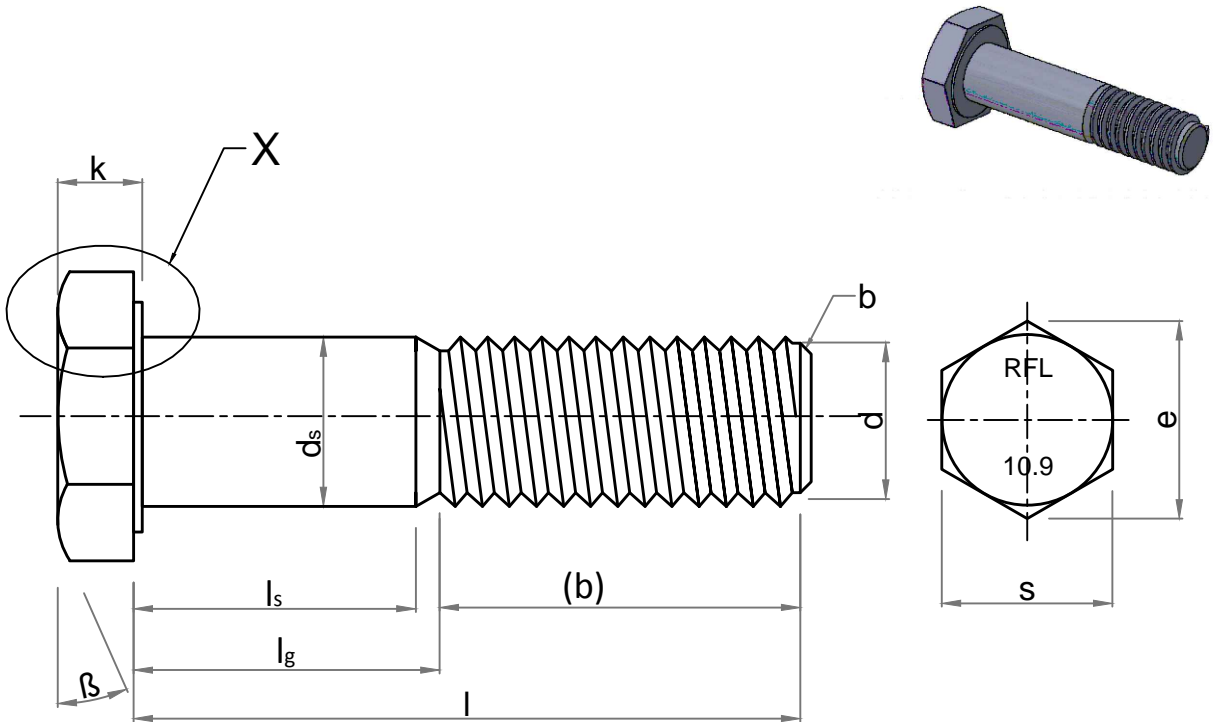


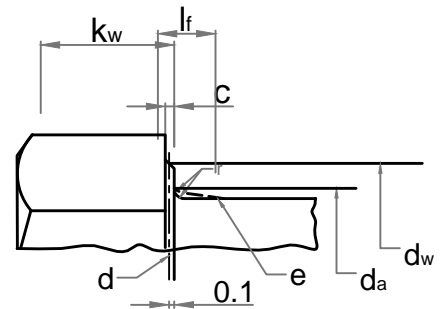
Note: This Drawing is the property of Kapil Enterprises-Kundli, and must not be copied or reproduced without permission or written authorisation by Kapil Enterprises-Kundli

All Dimension is in mm



Note:

- a. $\beta = 15^\circ$ to 30°
- b. Point shall be chamfered on for threads $< M4$ may be as-rolled (sheared end) in accordance with ISO 4753.
- c. Incomplete thread $\mu < 2P$.
- d. Reference datum for d_w .
- e. Maximum underhead fillet.



Hex Bolt DIN EN 14399-4 M-30x150

'X' Enlarge View

| Parameters | Symbol | Minimum | Maximum |
|-----------------------|--------------|---------|---------------|
| Raw material grade | G | | |
| Raw material diameter | D | 29.50 | 30.50 |
| Head thickness | k | 17.95 | 20.05 |
| Width A/F | s | 49.00 | 50.00 |
| Width A/C | e | 55.37 | - |
| Shank diameter | ds | 29.16 | 30.84 |
| Major diameter | D | 29.52 | 29.95 |
| Pitch diameter | D1 | 27.46 | 27.67 |
| Minor diameter | D2 | - | 26.16 |
| Threading length | (b) | 44.00 | 49.50 |
| Shank length | ls | 95.50 | - |
| Total Shank length | lg | - | 106.00 |
| Total length of bolt | l | 148.00 | 152.00 |
| da | da | - | 35.00 |
| dw | dw | 46.60 | - |
| Radius of fillet | r | 2.00 | - |
| c | c | 0.40 | 0.80 |
| Chamfer | b | 0.00 | 7.00 |
| Amendment | | | |
| Details | Revision No. | Dated | Authorised by |
| | | | |

| | | |
|--|--|---|
| Drawing No.- KE-BASE-1133-00008-14399.4-898.1-10.9-30x150 | | |
| Dimension as per | | DIN EN 14399-4 |
| Mechanical properties as per | | ISO 898-1 |
| Grade | | 10.9 |
| Size | | 30x150 |
| Pitch | | 3.50 |
| Title | Hex Bolt | Status- Approved |
| Dated | 04.04.2018 | Proj. |
| Mass/Weight | 1.088 kg/piece | |
| Drawn By Pankaj Kumar (Ass. QC Manager) | Checked By Santosh Kumar (Plant Head-GM) | Approved By Kapil Aggarwal CEO-MD |
| | | |
| Kapil Enterprises 330 EHTP, HSIIDC, Kundli Industrial Estate Sonepat - Haryana-131028, Ph:9811009061 Email:sales@bigboltnut.com, kapil@roll-fast.com | | |