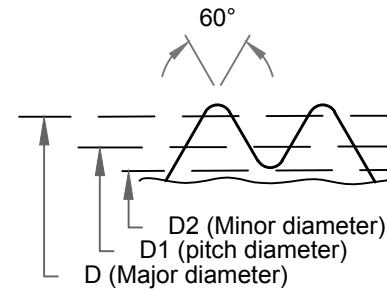
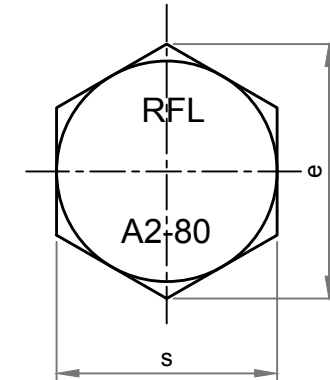
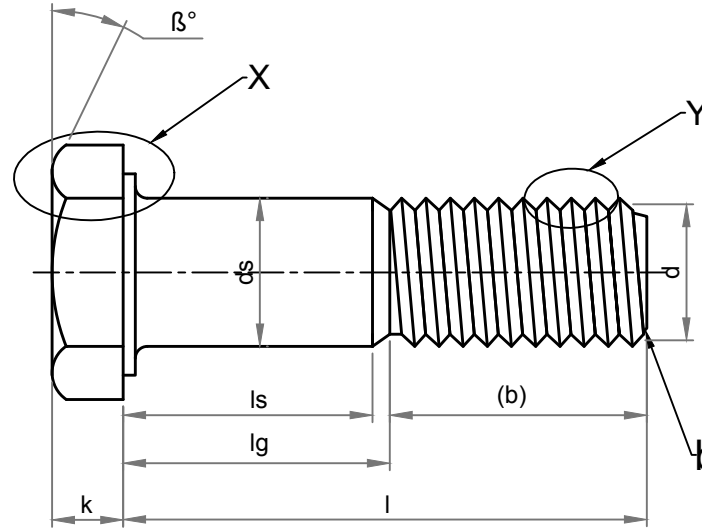


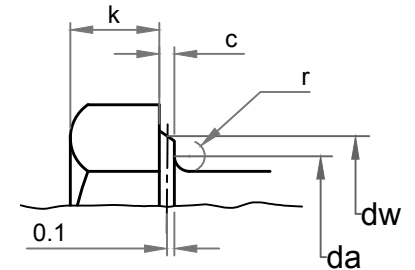
PARAMETERS	SYMBOL	MINIMUM	MAXIMUM
Width across flat	s	63.10	65.00
Width across corner	e	71.30	-
Head thickness	K	25.58	26.42
Shank diameter	ds	41.38	42.00
Major diameter	D	41.44	41.94
Pitch diameter	D1	38.80	38.90
Minor diameter	D2		37.07
Shank length	ls	71.50	-
Total Shank length	lg	-	94.00
Threading length	(b)	96.00	97.00
Total length	l	188.00	192.00
da	da	-	45.60
dw	dw	59.95	-
Radius of fillet	r	1.20	-
c	c	0.30	1.00
Chamfer	b	0.00	9.00
Pitch	P	4.50	

Note :

- $\beta = 15^\circ$ to 30°
- Point shall be chamfered on the threads $\leq M4$ may be as-rolled (sheared end) in accordance with ISO 4753.
- Incomplete thread $u \leq 2P$.
- Reference datum for dw.
- Maximum underhead fillet.



'Y' Enlarge View



'X' Enlarge View

Dimension as per	ISO 4014
Chemical & Mechanical properties as per	ISO 3506-1
Grade	A2-80
Threading as per	ISO 965
Weight	2.630 kg/piece

DRAWING NUMBER KE-BASE-1100-00129-4014-3506.1-A2-80-42x190			SIZE M42x190	TITLE HEX BOLT			
AMENDMENT ALL DIMENSION IN MM			DATE 05.06.2020	PROJECTION 	DRAWN BY PANKAJ KUMAR (ASST. QC MANAGER)	CHECKED BY SANTOSH KUMAR (PLANT HEAD-GM)	APPROVED BY KAPIL AGGARWAL CEO-MD
DETAILS	REVISION	DATE	APPROVED		ROLL FAST STAINLESS STEEL BOLTS HIGH TENSILE BOLTS PRECISION TURNED COMPONENTS		
REMOVE SHARP EDGES & BURRS	SHEET SIZE A4	SCALE NTS					
					Kapil Enterprises 330 EHTP, HSSI IDC, Kundli Industrial Estate Sonepat-Haryana-131028, Ph:9811009061 Email:- sales@bigboltnut.com , kapil@roll-fast.com		