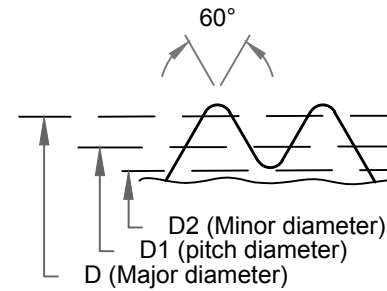
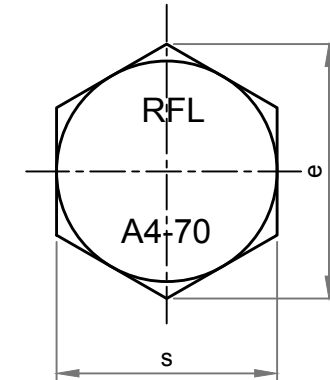
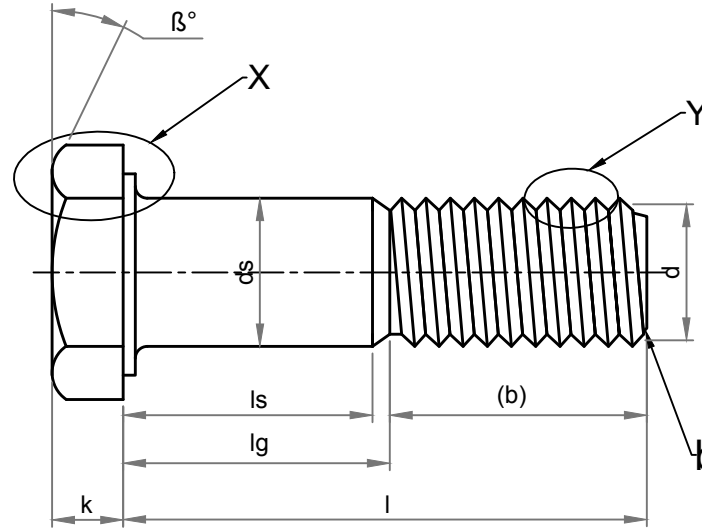


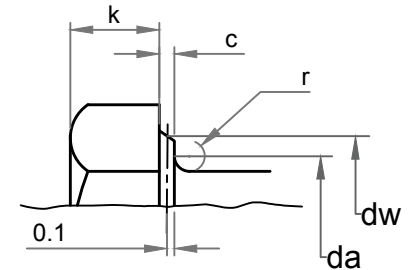
PARAMETERS	SYMBOL	MINIMUM	MAXIMUM
Width across flat	s	49.00	50.00
Width across corner	e	55.37	-
Head thickness	K	20.58	21.42
Shank diameter	ds	32.38	33.00
Major diameter	D	32.52	32.95
Pitch diameter	D1	30.50	30.60
Minor diameter	D2		26.16
Shank length	ls	131.50	-
Total Shank length	lg	-	149.00
Threading length	(b)	91.00	92.00
Total length	l	237.70	242.30
da	da	-	36.40
dw	dw	46.55	-
Radius of fillet	r	1.00	-
c	c	0.20	0.80
Chamfer	b	0.00	7.00
Pitch	P	3.50	

Note :

- $\beta = 15^\circ$ to 30°
- Point shall be chamfered on the threads $\leq M4$ may be as-rolled (sheared end) in accordance with ISO 4753.
- Incomplete thread $u \leq 2P$.
- Reference datum for dw.
- Maximum underhead fillet.



'Y' Enlarge View



'X' Enlarge View

Dimension as per	ISO 4014
Chemical & Mechanical properties as per	ISO 3506-1
Grade	A4-70
Threading as per	ISO 965
Weight	1.880 kg/piece

DRAWING NUMBER KE-BASE-1100-00090-4014-3506.1-A4-70-33x240			SIZE M33x240	TITLE HEX BOLT			
AMENDMENT ALL DIMENSION IN MM			DATE 05.06.2020	PROJECTION 	DRAWN BY PANKAJ KUMAR (ASST. QC MANAGER)	CHECKED BY SANTOSH KUMAR (PLANT HEAD-GM)	APPROVED BY KAPIL AGGARWAL CEO-MD
DETAILS	REVISION	DATE	APPROVED	ROLL FAST STAINLESS STEEL BOLTS HIGH TENSILE BOLTS PRECISION TURNED COMPONENTS	Kapil Enterprises 330 EHTP, HSSI IDC, Kundli Industrial Estate Sonapat-Haryana-131028, Ph:9811009061 Email:- sales@bigboltnut.com , kapil@roll-fast.com		
REMOVE SHARP EDGES & BURRS	SHEET SIZE A4	SCALE NTS					

A

B

C

D

E

F