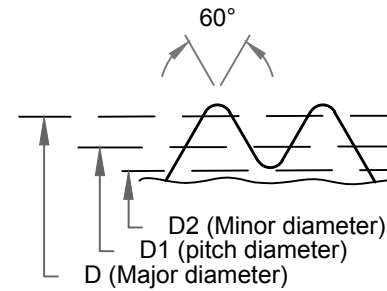
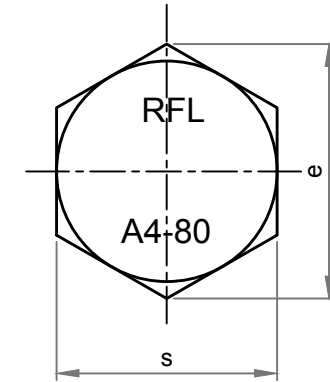
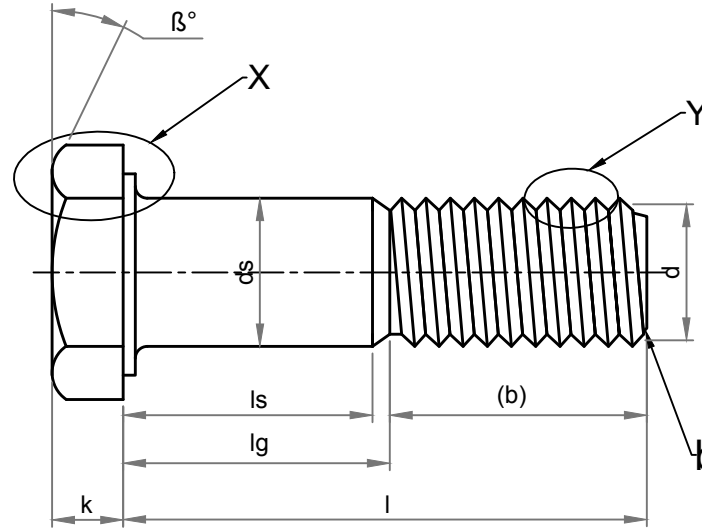


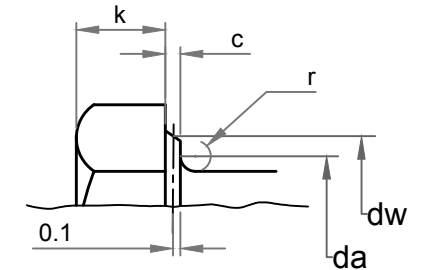
PARAMETERS	SYMBOL	MINIMUM	MAXIMUM
Width across flat	s	45.00	46.00
Width across corner	e	50.85	-
Head thickness	K	18.28	19.12
Shank diameter	ds	29.48	30.00
Major diameter	D	29.52	29.95
Pitch diameter	D1	27.50	27.60
Minor diameter	D2		26.16
Shank length	ls	157.50	-
Total Shank length	lg	-	175.00
Threading length	(b)	85.00	86.00
Total length	l	257.40	262.60
da	da	-	33.40
dw	dw	42.75	-
Radius of fillet	r	1.00	-
c	c	0.20	0.80
Chamfer	b	0.00	7.00
Pitch	P	3.50	

Note :

- $\beta = 15^\circ$  to  $30^\circ$
- Point shall be chamfered on the threads  $\leq M4$  may be as-rolled (sheared end) in accordance with ISO 4753.
- Incomplete thread  $u \leq 2P$ .
- Reference datum for dw.
- Maximum underhead fillet.



'Y' Enlarge View



'X' Enlarge View

Dimension as per	ISO 4014
Chemical & Mechanical properties as per	ISO 3506-1
Grade	A4-80
Threading as per	ISO 965
Weight	1.640 kg/piece

DRAWING NUMBER <b>KE-BASE-1100-00075-4014-3506.1-A4-80-30x260</b>			SIZE <b>M30x260</b>	TITLE <b>HEX BOLT</b>			
AMENDMENT <b>ALL DIMENSION IN MM</b>			DATE 05.06.2020	PROJECTION 	DRAWN BY <b>PANKAJ KUMAR</b> (ASST. QC MANAGER)	CHECKED BY <b>SANTOSH KUMAR</b> (PLANT HEAD-GM)	APPROVED BY <b>KAPIL AGGARWAL</b> CEO-MD
DETAILS	REVISION	DATE	<b>APPROVED</b>	<b>ROLL FAST</b> STAINLESS STEEL BOLTS HIGH TENSILE BOLTS PRECISION TURNED COMPONENTS	<b>Kapil Enterprises</b> 330 EHTP, HSSIIDC, Kundli Industrial Estate Sonapat-Haryana-131028, Ph:9811009061 Email:- <a href="mailto:sales@bigboltnut.com">sales@bigboltnut.com</a> , <a href="mailto:kapil@roll-fast.com">kapil@roll-fast.com</a>		
<b>REMOVE SHARP EDGES &amp; BURRS</b>	SHEET SIZE <b>A4</b>	SCALE <b>NTS</b>					

A

B

C

D

E

F